

Datasheet for ABIN7268733  
**anti-MEF2D antibody (AA 431-521)**[Go to Product page](#)

## 1 Image

## Overview

Quantity:	100 µL
Target:	MEF2D
Binding Specificity:	AA 431-521
Reactivity:	Human
Host:	Rabbit
Clonality:	Polyclonal
Conjugate:	This MEF2D antibody is un-conjugated
Application:	Western Blotting (WB)

## Product Details

Purpose:	MEF2D Rabbit pAb
Immunogen:	Recombinant fusion protein containing a sequence corresponding to amino acids 431-521 of human MEF2D (NP_005911.1).
Sequence:	TTHPHISIKS EPVSPSRERS PAPPPPAVFP AARPEPGDGL SSPAGGSYET GDRDDGRGDF GPTLGLLRPA PEPEAEGBSAV KRMRLDTWTL K
Isotype:	IgG
Cross-Reactivity:	Human, Mouse
Characteristics:	Polyclonal Antibodies
Purification:	Affinity purification

## Target Details

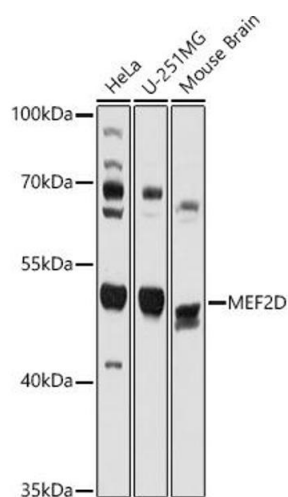
Target:	MEF2D
Alternative Name:	MEF2D ( <a href="#">MEF2D Products</a> )
Background:	<p>This gene is a member of the myocyte-specific enhancer factor 2 (MEF2) family of transcription factors. Members of this family are involved in control of muscle and neuronal cell differentiation and development, and are regulated by class II histone deacetylases. Fusions of the encoded protein with Deleted in Azoospermia-Associated Protein 1 (DAZAP1) due to a translocation have been found in an acute lymphoblastic leukemia cell line, suggesting a role in leukemogenesis. The encoded protein may also be involved in Parkinson disease and myotonic dystrophy. Alternative splicing results in multiple transcript variants.,MEF2D,Epigenetics &amp; Nuclear Signaling,Transcription Factors,Signal Transduction,ErbB-HER Signaling Pathway,MAPK-P38 Signaling Pathway,Endocrine &amp; Metabolism,AMPK Signaling Pathway,Neuroscience,Cardiovascular,Heart,Cardiogenesis,Hypertrophy,MEF2D</p>
Molecular Weight:	49kDa/50kDa/55kDa/56kDa
Gene ID:	4209
UniProt:	<a href="#">Q14814</a>

## Application Details

Application Notes:	WB,1:500 - 1:2000
Restrictions:	For Research Use only

## Handling

Format:	Liquid
Buffer:	PBS with 0.02 % sodium azide,50 % glycerol, pH 7.3.
Preservative:	Sodium azide
Precaution of Use:	This product contains Sodium azide: a POISONOUS AND HAZARDOUS SUBSTANCE which should be handled by trained staff only.
Storage:	-20 °C
Storage Comment:	Store at -20°C. Avoid freeze / thaw cycles.



Western Blotting

**Image 1.** Western blot analysis of extracts of various cell lines, using MEF2D antibody (ABIN7268733) at 1:1000 dilution. Secondary antibody: HRP Goat Anti-Rabbit IgG (H+L) (ABIN1684268 and ABIN3020597) at 1:10000 dilution. Lysates/proteins: 25 µg per lane. Blocking buffer: 3 % nonfat dry milk in TBST. Detection: ECL Basic Kit (RM00020). Exposure time: 30s.