



[Go to Product page](#)

Datasheet for ABIN7268742

anti-Myopalladin antibody (AA 1-250)

1 Image

Overview

Quantity:	100 µL
Target:	Myopalladin (MYPN)
Binding Specificity:	AA 1-250
Reactivity:	Human
Host:	Rabbit
Clonality:	Polyclonal
Conjugate:	This Myopalladin antibody is un-conjugated
Application:	Western Blotting (WB)

Product Details

Purpose:	MYPN Rabbit pAb
Immunogen:	Recombinant fusion protein containing a sequence corresponding to amino acids 1-250 of human MYPN (NP_115967.2).
Sequence:	<p>MQDDSI EAST SISQLLRESY LAETRHRGNN ERSRAEPSSN PCHFGSPSGA AEGGGGQDDL PDLSAFLSQE ELDESVNLAR LAINYDPLEK ADETQARKRL SPDQMKHSPN LSFEPNFCQD NPRSPTSSKE SPQEAKRPQY CSETQSKKVF LNKAADFIEE LSSLFKSHSS KRIRPRACKN HKKLESQNK VMQENSSSFS DLSERRERSS VPIPIPADTR DNEVNHAEQ QEAKRREA EQ AASEAAGGDT</p>
Isotype:	IgG
Cross-Reactivity:	Human, Mouse
Characteristics:	Polyclonal Antibodies

Product Details

Purification: Affinity purification

Target Details

Target: Myopalladin (MYPN)

Alternative Name: MYPN ([MYPN Products](#))

Background: Striated muscle in vertebrates comprises large proteins which must be organized properly to contract efficiently. Z-lines in striated muscle are a sign of this organization, representing the ends of actin thin filaments, titin, nebulin or nebulin and accessory proteins required for structure and function. This gene encodes a protein which interacts with nebulin in skeletal muscle or nebulin in cardiac muscle and alpha-actinin. In addition, this gene product can interact with a protein with the I-band indicating it has a regulatory as well as structural function. Alternative splicing results in multiple transcript variants.,MYPN,CMD1DD,CMH22,MYOP,NEM11,RCM4,Signal Transduction,Cell Biology & Developmental Biology,Cytoskeleton,Motor Proteins,MYPN

Molecular Weight: 56kDa/114kDa/145kDa

Gene ID: 84665

UniProt: [Q86TC9](#)

Application Details

Application Notes: WB,1:500 - 1:2000

Restrictions: For Research Use only

Handling

Format: Liquid

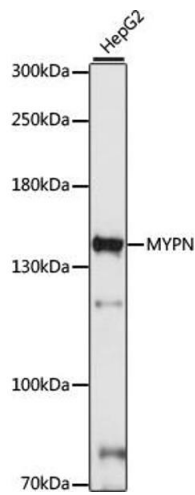
Buffer: PBS with 0.02 % sodium azide,50 % glycerol, pH 7.3.

Preservative: Sodium azide

Precaution of Use: This product contains Sodium azide: a POISONOUS AND HAZARDOUS SUBSTANCE which should be handled by trained staff only.

Storage: -20 °C

Storage Comment: Store at -20°C. Avoid freeze / thaw cycles.



Western Blotting

Image 1. Western blot analysis of extracts of HepG2 cells, using MYPN antibody (ABIN7268742) at 1:1000 dilution. Secondary antibody: HRP Goat Anti-Rabbit IgG (H+L) (ABIN1684268 and ABIN3020597) at 1:10000 dilution. Lysates/proteins: 25 µg per lane. Blocking buffer: 3 % nonfat dry milk in TBST. Detection: ECL Basic Kit (RM00020). Exposure time: 90s.