

Datasheet for ABIN7268745

**anti-MYH11 antibody**

## 7 Images

[Go to Product page](#)

## Overview

Quantity:	100 µL
Target:	MYH11
Reactivity:	Human
Host:	Rabbit
Clonality:	Monoclonal
Conjugate:	This MYH11 antibody is un-conjugated
Application:	Immunohistochemistry (IHC), Western Blotting (WB), Immunofluorescence (IF)

## Product Details

Purpose:	SMMHC/MYH11 Rabbit mAb
Immunogen:	A synthesized peptide derived from human SMMHC/SMMHC/MYH11
Isotype:	IgG
Cross-Reactivity:	Human, Mouse, Rat
Characteristics:	Monoclonal Antibodies
Purification:	Affinity purification

## Target Details

Target:	MYH11
Alternative Name:	MYH11 ( <a href="#">MYH11 Products</a> )
Background:	The protein encoded by this gene is a smooth muscle myosin belonging to the myosin heavy

## Target Details

chain family. The gene product is a subunit of a hexameric protein that consists of two heavy chain subunits and two pairs of non-identical light chain subunits. It functions as a major contractile protein, converting chemical energy into mechanical energy through the hydrolysis of ATP. The gene encoding a human ortholog of rat NUDE1 is transcribed from the reverse strand of this gene, and its 3' end overlaps with that of the latter. The pericentric inversion of chromosome 16 [inv(16)(p13q22)] produces a chimeric transcript that encodes a protein consisting of the first 165 residues from the N terminus of core-binding factor beta in a fusion with the C-terminal portion of the smooth muscle myosin heavy chain. This chromosomal rearrangement is associated with acute myeloid leukemia of the M4Eo subtype. Alternative splicing generates isoforms that are differentially expressed, with ratios changing during muscle cell maturation. Alternatively spliced transcript variants encoding different isoforms have been identified. [provided by RefSeq, Jul 2008],AAT4, FAA4, SMHC, SMMHC,Cardiovascular,Cardiovascular Markers,Cardiovascular Markers\_Smooth Muscle Cells,Cell Biology & Developmental Biology,Cytoskeleton,Cytoskeleton\_Motor Proteins,Heart,Heart\_Contractility,Signal Transduction,Stem Cells,MYH11

Molecular Weight: 250kDa

Gene ID: 4629

UniProt: [P35749](#)

## Application Details

Application Notes: WB,1:500 - 1:2000,IHC,1:50 - 1:200,IF,1:50 - 1:200

Restrictions: For Research Use only

## Handling

Format: Liquid

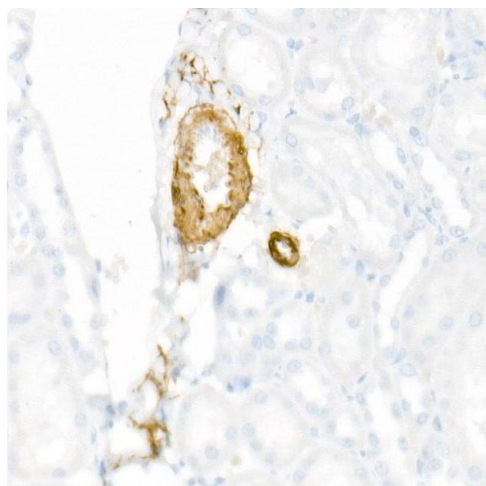
Buffer: PBS with 0.02 % sodium azide,0.05 % BSA,50 % glycerol, pH 7.3.

Preservative: Sodium azide

Precaution of Use: This product contains Sodium azide: a POISONOUS AND HAZARDOUS SUBSTANCE which should be handled by trained staff only.

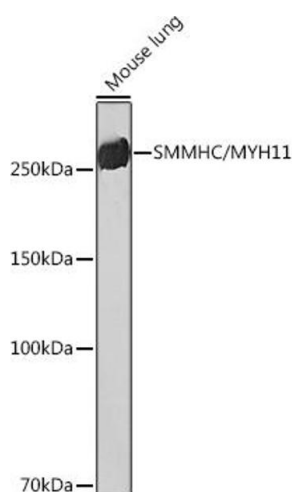
Storage: -20 °C

Storage Comment: Store at -20°C. Avoid freeze / thaw cycles.



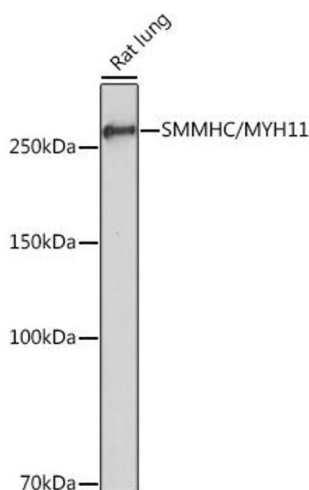
### Immunohistochemistry

**Image 1.** Immunohistochemistry of paraffin-embedded Rat kidney using SMMHC/MYH11 antibody (ABIN7268745) at dilution of 1:8100 (40x lens). Perform high pressure antigen retrieval with 10 mM citrate buffer pH 6.0 before commencing with IHC staining protocol.



### Western Blotting

**Image 2.** Western blot analysis of extracts of Mouse lung, using SMMHC/SMMHC/MYH11 Rabbit mAb (ABIN7268745) at 1:1000 dilution. Secondary antibody: HRP Goat Anti-Rabbit IgG (H+L) (ABIN1684268 and ABIN3020597) at 1:10000 dilution. Lysates/proteins: 25 µg per lane. Blocking buffer: 3 % nonfat dry milk in TBST. Detection: ECL Basic Kit (RM00020). Exposure time: 3 min.



### Western Blotting

**Image 3.** Western blot analysis of extracts of Rat lung, using SMMHC/SMMHC/MYH11 Rabbit mAb (ABIN7268745) at 1:1000 dilution. Secondary antibody: HRP Goat Anti-Rabbit IgG (H+L) (ABIN1684268 and ABIN3020597) at 1:10000 dilution. Lysates/proteins: 25 µg per lane. Blocking buffer: 3 % nonfat dry milk in TBST. Detection: ECL Enhanced Kit (RM00021). Exposure time: 3 min.

Please check the [product details page](#) for more images. Overall 7 images are available for ABIN7268745.