

Datasheet for ABIN7268755

**anti-MYL9 antibody****1** Image[Go to Product page](#)

## Overview

Quantity:	100 µL
Target:	MYL9
Reactivity:	Human
Host:	Rabbit
Clonality:	Monoclonal
Conjugate:	This MYL9 antibody is un-conjugated
Application:	Western Blotting (WB)

## Product Details

Purpose:	MYL9 Rabbit mAb
Immunogen:	A synthesized peptide derived from human MYL9
Isotype:	IgG
Cross-Reactivity:	Human, Mouse
Characteristics:	Monoclonal Antibodies
Purification:	Affinity purification

## Target Details

Target:	MYL9
Alternative Name:	MYL9 ( <a href="#">MYL9 Products</a> )
Background:	Myosin, a structural component of muscle, consists of two heavy chains and four light chains.

## Target Details

The protein encoded by this gene is a myosin light chain that may regulate muscle contraction by modulating the ATPase activity of myosin heads. The encoded protein binds calcium and is activated by myosin light chain kinase. Two transcript variants encoding different isoforms have been found for this gene. [provided by RefSeq, Jul 2008],LC20, MLC-2C, MLC2, MRLC1, MYRL2,Cell Biology & Developmental Biology,Cytoskeleton,Cytoskeleton\_Actins,Cytoskeleton\_Motor Proteins,Protein phosphorylation,Signal Transduction,TGF-b-Smad Signaling Pathway,MYL9

Molecular Weight: 18kDa

Gene ID: 10398

UniProt: [P24844](#)

## Application Details

Application Notes: WB,1:500 - 1:2000

Restrictions: For Research Use only

## Handling

Format: Liquid

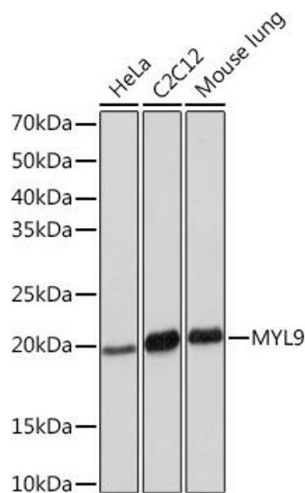
Buffer: PBS with 0.02 % sodium azide,0.05 % BSA,50 % glycerol, pH 7.3.

Preservative: Sodium azide

Precaution of Use: This product contains Sodium azide: a POISONOUS AND HAZARDOUS SUBSTANCE which should be handled by trained staff only.

Storage: -20 °C

Storage Comment: Store at -20°C. Avoid freeze / thaw cycles.



Western Blotting

**Image 1.** Western blot analysis of extracts of various cell lines, using MYL9 Rabbit mAb (ABIN7268755) at 1:1000 dilution. Secondary antibody: HRP Goat Anti-Rabbit IgG (H+L) (ABIN1684268 and ABIN3020597) at 1:10000 dilution. Lysates/proteins: 25 µg per lane. Blocking buffer: 3 % nonfat dry milk in TBST. Detection: ECL Basic Kit (RM00020). Exposure time: 10s.