

Datasheet for ABIN7268763

anti-MTMR1 antibody[Go to Product page](#)**1** Image

Overview

| | |
|--------------|-----------------------|
| Quantity: | 100 µL |
| Target: | MTMR1 |
| Reactivity: | Human |
| Host: | Rabbit |
| Clonality: | Polyclonal |
| Application: | Western Blotting (WB) |

Product Details

| | |
|-------------------|-------------------------------------|
| Purpose: | MTMR1 Rabbit pAb |
| Immunogen: | A synthetic peptide of Human MTMR1. |
| Isotype: | IgG |
| Cross-Reactivity: | Human, Mouse |
| Characteristics: | Polyclonal Antibodies |
| Purification: | Affinity purification |

Target Details

| | |
|-------------------|--|
| Target: | MTMR1 |
| Alternative Name: | MTMR1 (MTMR1 Products) |
| Background: | This gene encodes a member of the myotubularin related family of proteins. Members of this family contain the consensus sequence for the active site of protein tyrosine phosphatases. |

Target Details

| | |
|-----------|--|
| | Alternatively spliced variants have been described but their biological validity has not been determined. [provided by RefSeq, Jul 2008],MTMR1,Signal Transduction,MTMR1 |
| Gene ID: | 8776 |
| UniProt: | Q13613 |
| Pathways: | Inositol Metabolic Process |

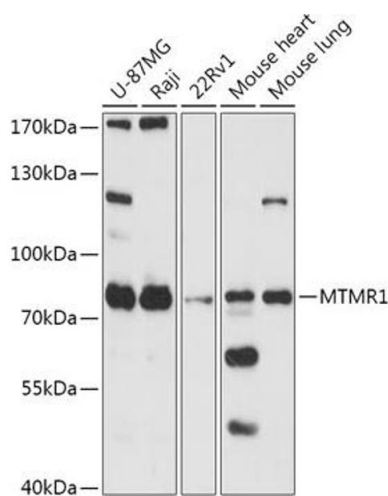
Application Details

| | |
|--------------------|-----------------------|
| Application Notes: | WB,1:500 - 1:2000 |
| Restrictions: | For Research Use only |

Handling

| | |
|--------------------|--|
| Format: | Liquid |
| Buffer: | PBS with 0.02 % sodium azide,50 % glycerol, pH 7.3. |
| Preservative: | Sodium azide |
| Precaution of Use: | This product contains Sodium azide: a POISONOUS AND HAZARDOUS SUBSTANCE which should be handled by trained staff only. |
| Storage: | -20 °C |
| Storage Comment: | Store at -20°C. Avoid freeze / thaw cycles. |

Images



Western Blotting

Image 1. Western blot analysis of extracts of various cell lines, using MTMR1 antibody (ABIN7268763) at 1:1000 dilution. Secondary antibody: HRP Goat Anti-Rabbit IgG (H+L) (ABIN1684268 and ABIN3020597) at 1:10000 dilution. Lysates/proteins: 25 µg per lane. Blocking buffer: 3 % nonfat dry milk in TBST. Detection: ECL Basic Kit (RM00020). Exposure time: 90s.