

Datasheet for ABIN7268779

anti-NAPA antibody**1** Image[Go to Product page](#)

Overview

Quantity:	100 µL
Target:	NAPA
Reactivity:	Human
Host:	Rabbit
Clonality:	Monoclonal
Conjugate:	This NAPA antibody is un-conjugated
Application:	Western Blotting (WB)

Product Details

Purpose:	Alpha SNAP Rabbit mAb
Immunogen:	Recombinant protein of human Alpha SNAP .
Isotype:	IgG
Cross-Reactivity:	Human, Mouse, Rat
Characteristics:	Monoclonal Antibodies
Purification:	Affinity purification

Target Details

Target:	NAPA
Alternative Name:	Alpha SNAP (NAPA Products)
Background:	This gene encodes a member of the soluble NSF attachment protein (SNAP) family. SNAP

Target Details

proteins play a critical role in the docking and fusion of vesicles to target membranes as part of the 20S NSF-SNAP-SNARE complex. The encoded protein plays a role in the completion of membrane fusion by mediating the interaction of N-ethylmaleimide-sensitive factor (NSF) with the vesicle-associated and membrane-associated SNAP receptor (SNARE) complex, and stimulating the ATPase activity of NSF. Alternatively spliced transcript variants have been observed for this gene.,NAPA, SNAPA, NSF attachment protein alpha,Signal Transduction,Neuroscience,Alpha SNAP

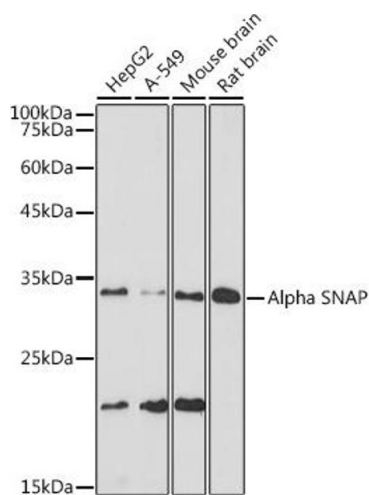
Molecular Weight:	33kDa
Gene ID:	8775
UniProt:	P54920
Pathways:	Synaptic Vesicle Exocytosis , Asymmetric Protein Localization

Application Details

Application Notes:	WB,1:500 - 1:2000
Restrictions:	For Research Use only

Handling

Format:	Liquid
Buffer:	PBS with 0.02 % sodium azide,0.05 % BSA,50 % glycerol, pH 7.3.
Preservative:	Sodium azide
Precaution of Use:	This product contains Sodium azide: a POISONOUS AND HAZARDOUS SUBSTANCE which should be handled by trained staff only.
Storage:	-20 °C
Storage Comment:	Store at -20°C. Avoid freeze / thaw cycles.



Western Blotting

Image 1. Western blot analysis of extracts of various cell lines, using Alpha SNAP antibody (ABIN7268779) at 1:1000 dilution. Secondary antibody: HRP Goat Anti-Rabbit IgG (H+L) (ABIN1684268 and ABIN3020597) at 1:10000 dilution. Lysates/proteins: 25 µg per lane. Blocking buffer: 3 % nonfat dry milk in TBST. Detection: ECL Basic Kit (RM00020). Exposure time: 30s.