

Datasheet for ABIN7268847

**anti-NPHP1 antibody**[Go to Product page](#)**2** Images

## Overview

Quantity:	100 µL
Target:	NPHP1
Reactivity:	Human
Host:	Rabbit
Clonality:	Monoclonal
Conjugate:	This NPHP1 antibody is un-conjugated
Application:	Western Blotting (WB)

## Product Details

Purpose:	NPHP1 Rabbit mAb
Immunogen:	Recombinant protein of human NPHP1.
Isotype:	IgG
Cross-Reactivity:	Human, Mouse, Rat
Characteristics:	Monoclonal Antibodies
Purification:	Affinity purification

## Target Details

Target:	NPHP1
Alternative Name:	NPHP1 ( <a href="#">NPHP1 Products</a> )
Background:	This gene encodes a protein with src homology domain 3 (SH3) patterns. This protein interacts

## Target Details

with Crk-associated substrate, and it appears to function in the control of cell division, as well as in cell-cell and cell-matrix adhesion signaling, likely as part of a multifunctional complex localized in actin- and microtubule-based structures. Mutations in this gene cause familial juvenile nephronophthisis type 1, a kidney disorder involving both tubules and glomeruli. Defects in this gene are also associated with Senior-Loken syndrome type 1, also referred to as juvenile nephronophthisis with Leber amaurosis, which is characterized by kidney and eye disease, and with Joubert syndrome type 4, which is characterized by cerebellar ataxia, oculomotor apraxia, psychomotor delay and neonatal breathing abnormalities, sometimes including retinal dystrophy and renal disease. Multiple transcript variants encoding different isoforms have been found for this gene.,NPHP1,JBTS4,NPH1,SLSN1,Signal Transduction,Kinase,Tyrosine kinases,Cell Biology & Developmental Biology,NPHP1

Molecular Weight: 69kDa/77kDa/83kDa

Gene ID: 4867

UniProt: [O15259](#)

## Application Details

Application Notes: WB,1:500 - 1:2000,IHC,1:50 - 1:200,IF,1:50 - 1:200

Restrictions: For Research Use only

## Handling

Format: Liquid

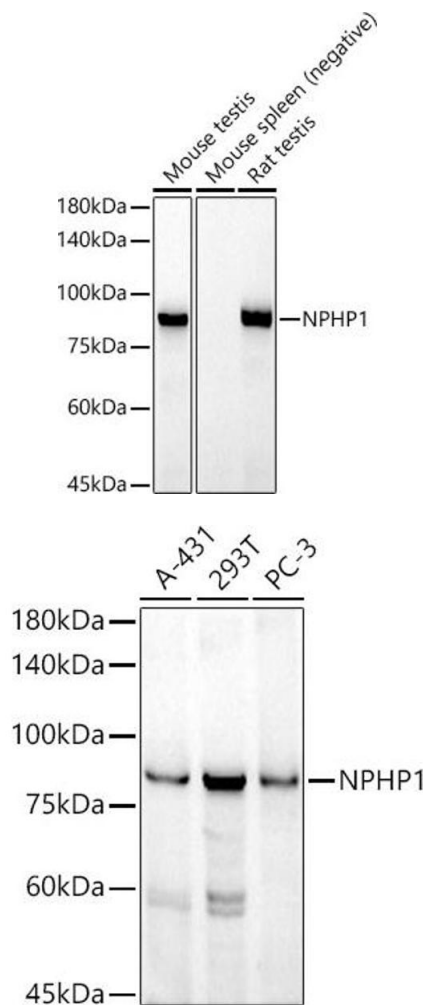
Buffer: PBS with 0.02 % sodium azide,50 % glycerol, pH 7.3.

Preservative: Sodium azide

Precaution of Use: This product contains Sodium azide: a POISONOUS AND HAZARDOUS SUBSTANCE which should be handled by trained staff only.

Storage: -20 °C

Storage Comment: Store at -20°C. Avoid freeze / thaw cycles.



#### Western Blotting

**Image 1.** Western blot analysis of extracts of various cell lines, using NPHP1 antibody (ABIN7268847) at 1:1000 dilution. Secondary antibody: HRP Goat Anti-Rabbit IgG (H+L) (ABIN1684268 and ABIN3020597) at 1:10000 dilution. Lysates/proteins: 25 µg per lane. Blocking buffer: 3 % nonfat dry milk in TBST. Detection: ECL Basic Kit (RM00020). Exposure time: 90s.

#### Western Blotting

**Image 2.** Western blot analysis of extracts of various cell lines, using NPHP1 antibody (ABIN7268847) at 1:1000 dilution. Secondary antibody: HRP Goat Anti-Rabbit IgG (H+L) (ABIN1684268 and ABIN3020597) at 1:10000 dilution. Lysates/proteins: 25 µg per lane. Blocking buffer: 3 % nonfat dry milk in TBST. Detection: ECL Basic Kit (RM00020). Exposure time: 180s.