



[Go to Product page](#)

Datasheet for ABIN7268851  
**anti-NHLH1 antibody (AA 1-60)**

1 Image

Overview

Quantity:	100 µL
Target:	NHLH1
Binding Specificity:	AA 1-60
Reactivity:	Human
Host:	Rabbit
Clonality:	Polyclonal
Conjugate:	This NHLH1 antibody is un-conjugated
Application:	Western Blotting (WB)

Product Details

Purpose:	NHLH1 Rabbit pAb
Immunogen:	Recombinant fusion protein containing a sequence corresponding to amino acids 1-60 of human NHLH1 (NP_005589.1).
Sequence:	MMLNSDTMEL DLPPTHSETE SGFSDCGGGA GPDGAGPGGP GGGQARGPEP GEPGRKDLQH
Isotype:	IgG
Cross-Reactivity:	Human
Characteristics:	Polyclonal Antibodies
Purification:	Affinity purification

## Target Details

---

Target:	NHLH1
Alternative Name:	NHLH1 ( <a href="#">NHLH1 Products</a> )
Background:	The helix-loop-helix (HLH) proteins are a family of putative transcription factors, some of which have been shown to play an important role in growth and development of a wide variety of tissues and species. Four members of this family have been clearly implicated in tumorigenesis via their involvement in chromosomal translocations in lymphoid tumors: MYC (MIM 190080), LYL1 (MIM 151440), E2A (MIM 147141), and SCL (MIM 187040),,NHLH1,HEN1,NSCL,NSCL1,bHLHa35,Epigenetics & Nuclear Signaling,Transcription Factors,Neuroscience,NHLH1
Molecular Weight:	14kDa
Gene ID:	4807
UniProt:	<a href="#">Q02575</a>

## Application Details

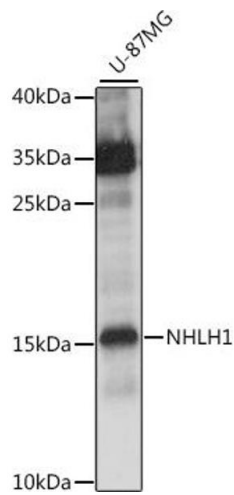
---

Application Notes:	WB,1:500 - 1:2000
Restrictions:	For Research Use only

## Handling

---

Format:	Liquid
Buffer:	PBS with 0.02 % sodium azide,50 % glycerol, pH 7.3.
Preservative:	Sodium azide
Precaution of Use:	This product contains Sodium azide: a POISONOUS AND HAZARDOUS SUBSTANCE which should be handled by trained staff only.
Storage:	-20 °C
Storage Comment:	Store at -20°C. Avoid freeze / thaw cycles.



### Western Blotting

**Image 1.** Western blot analysis of extracts of U-87MG cells, using NHLH1 antibody at 1:1000 dilution. Secondary antibody: HRP Goat Anti-Rabbit IgG (H+L) (ABIN1684268 and ABIN3020597) at 1:10000 dilution. Lysates/proteins: 25 µg per lane. Blocking buffer: 3% nonfat dry milk in TBST. Detection: ECL Basic Kit (RM00020). Exposure time: 10s.