



[Go to Product page](#)

Datasheet for ABIN7268857  
**anti-NEURL1B antibody**

3 Images

### Overview

Quantity:	100 µL
Target:	NEURL1B
Reactivity:	Human
Host:	Rabbit
Clonality:	Polyclonal
Conjugate:	This NEURL1B antibody is un-conjugated
Application:	Western Blotting (WB), Immunohistochemistry (IHC)

### Product Details

Purpose:	NEURL1B Rabbit pAb
Immunogen:	Recombinant protein of human NEURL1B.
Isotype:	IgG
Cross-Reactivity:	Human, Mouse, Rat
Characteristics:	Polyclonal Antibodies
Purification:	Affinity purification

### Target Details

Target:	NEURL1B
Alternative Name:	NEURL1B ( <a href="#">NEURL1B Products</a> )
Background:	E3 ubiquitin-protein ligase involved in regulation of the Notch pathway through influencing the

## Target Details

stability and activity of several Notch ligands.,neur2, NEURL3, RNF67B, hNeur2,NEURL1B

Molecular Weight: 59kDa

Gene ID: 54492

UniProt: [A8MQ27](#)

Pathways: [Notch Signaling](#)

## Application Details

Application Notes: WB,1:500 - 1:1000,IHC,1:50 - 1:200

Restrictions: For Research Use only

## Handling

Format: Liquid

Buffer: PBS with 0.02 % sodium azide,50 % glycerol, pH 7.3.

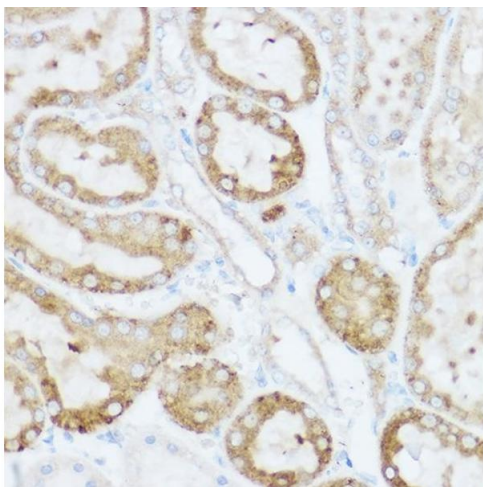
Preservative: Sodium azide

Precaution of Use: This product contains Sodium azide: a POISONOUS AND HAZARDOUS SUBSTANCE which should be handled by trained staff only.

Storage: -20 °C

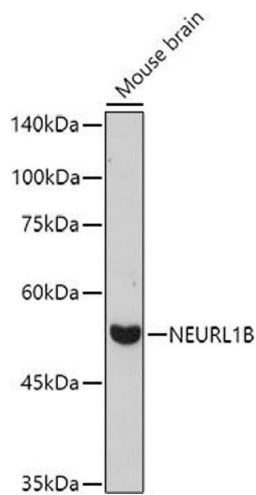
Storage Comment: Store at -20°C. Avoid freeze / thaw cycles.

## Images



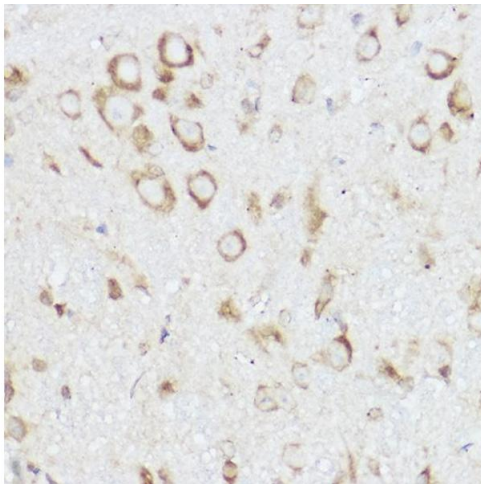
### Immunohistochemistry

**Image 1.** Immunohistochemistry of paraffin-embedded rat kidney using NEURL1B Rabbit pAb (ABIN7268857) at dilution of 1:100 (40x lens). Perform high pressure antigen retrieval with 10 mM citrate buffer pH 6.0 before commencing with IHC staining protocol.



### Western Blotting

**Image 2.** Western blot analysis of extracts of Mouse brain, using NEURL1B antibody (ABIN7268857) at 1:1000 dilution. Secondary antibody: HRP Goat Anti-Rabbit IgG (H+L) (ABIN1684268 and ABIN3020597) at 1:10000 dilution. Lysates/proteins: 25 µg per lane. Blocking buffer: 3 % nonfat dry milk in TBST. Detection: ECL Basic Kit (RM00020). Exposure time: 180s.



### Immunohistochemistry

**Image 3.** Immunohistochemistry of paraffin-embedded mouse spinal cord using NEURL1B Rabbit pAb (ABIN7268857) at dilution of 1:100 (40x lens). Perform high pressure antigen retrieval with 10 mM citrate buffer pH 6.0 before commencing with IHC staining protocol.