



[Go to Product page](#)

Datasheet for ABIN7268867

anti-NEFL antibody

7 Images

Overview

Quantity:	100 µL
Target:	NEFL
Reactivity:	Human
Host:	Rabbit
Clonality:	Monoclonal
Conjugate:	This NEFL antibody is un-conjugated
Application:	Western Blotting (WB), Immunohistochemistry (IHC), Immunofluorescence (IF), Immunoprecipitation (IP)

Product Details

Purpose:	Neurofilament L Rabbit mAb
Immunogen:	Recombinant protein of human Neurofilament L.
Isotype:	IgG
Cross-Reactivity:	Human, Mouse, Rat
Characteristics:	Monoclonal Antibodies
Purification:	Affinity purification

Target Details

Target:	NEFL
Alternative Name:	NEFL (NEFL Products)

Target Details

Background: Neurofilaments are type IV intermediate filament heteropolymers composed of light, medium, and heavy chains. Neurofilaments comprise the axoskeleton and they functionally maintain the neuronal caliber. They may also play a role in intracellular transport to axons and dendrites. This gene encodes the light chain neurofilament protein. Mutations in this gene cause Charcot-Marie-Tooth disease types 1F (CMT1F) and 2E (CMT2E), disorders of the peripheral nervous system that are characterized by distinct neuropathies. A pseudogene has been identified on chromosome Y.,NEFL,CMT1F,CMT2E,NF-L,NF68,NFL,PPP1R110,Signal Transduction,Cell Biology & Developmental Biology,Cell Adhesion,Cytoskeleton,Intermediate Filaments,Neuroscience,Cell Type Marker,Neurodegenerative Diseases,Amyloid Plaque and Neurofibrillary Tangle Formation in Alzheimer's Disease,Stem Cells,Neural Stem Cell marker,Neuron marker,Axon marker,NEFL

Gene ID: 4747

UniProt: [P07196](#)

Application Details

Application Notes: WB,1:500 - 1:2000,IHC,1:50 - 1:200,IF,1:50 - 1:200,IP,1:50 - 1:200

Restrictions: For Research Use only

Handling

Format: Liquid

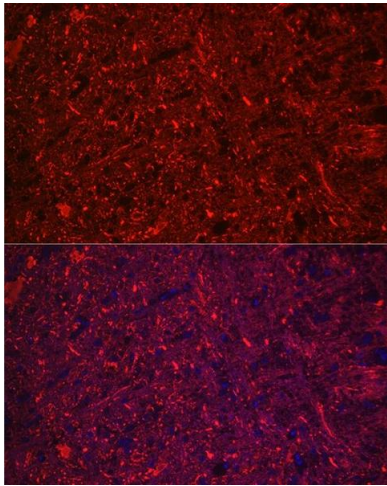
Buffer: PBS with 0.02 % sodium azide,50 % glycerol, pH 7.3.

Preservative: Sodium azide

Precaution of Use: This product contains Sodium azide: a POISONOUS AND HAZARDOUS SUBSTANCE which should be handled by trained staff only.

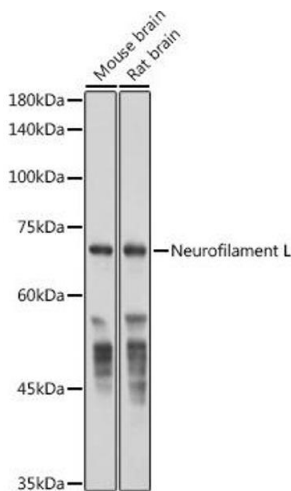
Storage: -20 °C

Storage Comment: Store at -20°C. Avoid freeze / thaw cycles.



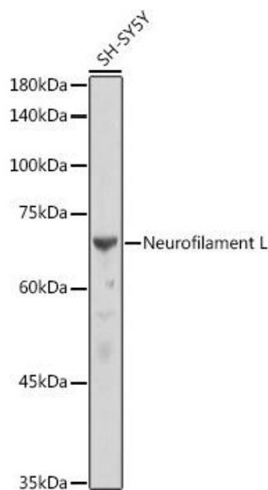
Immunofluorescence

Image 1. Immunofluorescence analysis of rat brain using Neurofilament L Rabbit mAb (ABIN7268867) at dilution of 1:100 (40x lens). Blue: DAPI for nuclear staining.



Western Blotting

Image 2. Western blot analysis of extracts of various cell lines, using Neurofilament L antibody (ABIN7268867) at 1:50000 dilution. Secondary antibody: HRP Goat Anti-Rabbit IgG (H+L) (ABIN1684268 and ABIN3020597) at 1:10000 dilution. Lysates/proteins: 25 µg per lane. Blocking buffer: 3 % nonfat dry milk in TBST. Detection: ECL Basic Kit (RM00020). Exposure time: 1s.



Western Blotting

Image 3. Western blot analysis of extracts of SH-SY5Y cells, using Neurofilament L antibody (ABIN7268867) at 1:10000 dilution. Secondary antibody: HRP Goat Anti-Rabbit IgG (H+L) (ABIN1684268 and ABIN3020597) at 1:10000 dilution. Lysates/proteins: 25 µg per lane. Blocking buffer: 3 % nonfat dry milk in TBST. Detection: ECL Basic Kit (RM00020). Exposure time: 1s.

Please check the [product details page](#) for more images. Overall 7 images are available for ABIN7268867.