

Datasheet for ABIN7268882
anti-NGEF antibody (AA 429-710)



[Go to Product page](#)

1 Image

Overview

Quantity:	100 µL
Target:	NGEF
Binding Specificity:	AA 429-710
Reactivity:	Human
Host:	Rabbit
Clonality:	Polyclonal
Conjugate:	This NGEF antibody is un-conjugated
Application:	Western Blotting (WB), Immunohistochemistry (IHC), Immunofluorescence (IF)

Product Details

Purpose:	NGEF Rabbit pAb
Immunogen:	Recombinant fusion protein containing a sequence corresponding to amino acids 429-710 of human NGEF (NP_062824.2).
Sequence:	RVEERSEREC TALDAHKELE MVMKACNEGV RKMSRTEQMI SIQKKMEFKI KSVPIISHSR WLLKQGELQQ MSGPKTSRTL RTKKLFHEIY LFLFNDLLVI CRQIPGDKYQ VFDSAPRGLL RVEELEDQGQ TLANVFILRL LENADDREAT YMLKASSQSE MKRWMTSLAP NRRTKFVSFT SRLLDPCQVQ CVHPYVAQQP DELTLELADI LNILDKTDDG WIFGERLHDQ ERGWFPSSMT EEILNPKIRS QNLKECFRVH KMDDPQRSQN KDRRKLGSRN RQ
Isotype:	IgG
Cross-Reactivity:	Human, Mouse, Rat
Characteristics:	Polyclonal Antibodies

Product Details

Purification: Affinity purification

Target Details

Target: NGEF

Alternative Name: NGEF

Background: Acts as a guanine nucleotide exchange factor (GEF which differentially activates the GTPases RHOA, RAC1 and CDC42. Plays a role in axon guidance regulating ephrin-induced growth cone collapse and dendritic spine morphogenesis. Upon activation by ephrin through EPHA4, the GEF activity switches toward RHOA resulting in its activation. Activated RHOA promotes cone retraction at the expense of RAC1- and CDC42-stimulated growth cone extension (By similarity.,NGEF,ARHGEF27,EPHEXIN,ephexin-1,Signal Transduction,G protein signaling,Signal Transduction,Neuroscience,NGEF

Molecular Weight: 26kDa/71kDa/82kDa

Gene ID: 25791

UniProt: [Q8N5V2](#)

Pathways: [Neurotrophin Signaling Pathway](#)

Application Details

Application Notes: WB,1:500 - 1:2000,IHC,1:50 - 1:100,IF,1:50 - 1:100

Restrictions: For Research Use only

Handling

Format: Liquid

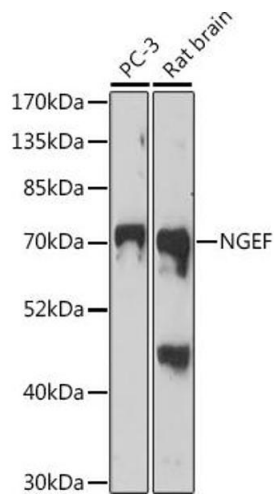
Buffer: PBS with 0.02 % sodium azide,50 % glycerol, pH 7.3.

Preservative: Sodium azide

Precaution of Use: This product contains Sodium azide: a POISONOUS AND HAZARDOUS SUBSTANCE which should be handled by trained staff only.

Storage: -20 °C

Storage Comment: Store at -20°C. Avoid freeze / thaw cycles.



Western Blotting

Image 1. Western blot analysis of extracts of various cell lines, using NGEF antibody (ABIN7268882) at 1:1000 dilution. Secondary antibody: HRP Goat Anti-Rabbit IgG (H+L) (ABIN1684268 and ABIN3020597) at 1:10000 dilution. Lysates/proteins: 25 µg per lane. Blocking buffer: 3 % nonfat dry milk in TBST. Detection: ECL Basic Kit (RM00020). Exposure time: 3 min.