



[Go to Product page](#)

Datasheet for ABIN7268912

anti-NIF3L1 antibody

2 Images

Overview

Quantity:	100 µL
Target:	NIF3L1
Reactivity:	Human
Host:	Rabbit
Clonality:	Monoclonal
Conjugate:	This NIF3L1 antibody is un-conjugated
Application:	Western Blotting (WB)

Product Details

Purpose:	ALS2CR1 Rabbit mAb
Immunogen:	A synthesized peptide derived from human ALS2CR1.
Isotype:	IgG
Cross-Reactivity:	Human, Rat
Characteristics:	Monoclonal Antibodies
Purification:	Affinity purification

Target Details

Target:	NIF3L1
Alternative Name:	ALS2CR1 (NIF3L1 Products)
Background:	May function as a transcriptional corepressor through its interaction with COPS2, negatively

Target Details

regulating the expression of genes involved in neuronal differentiation.,NIF3L1, ALS2CR1, CALS-7, MDS015, NIF3-like protein 1,Neuroscience,Neurodegenerative Diseases,Amyloid Plaque and Neurofibrillary Tangle Formation in Alzheimer's Disease,ALS2CR1

Molecular Weight: 38kDa

Gene ID: 60491

UniProt: [Q9GZT8](#)

Application Details

Application Notes: WB,1:500 - 1:2000

Restrictions: For Research Use only

Handling

Format: Liquid

Buffer: PBS with 0.02 % sodium azide,50 % glycerol, pH 7.3.

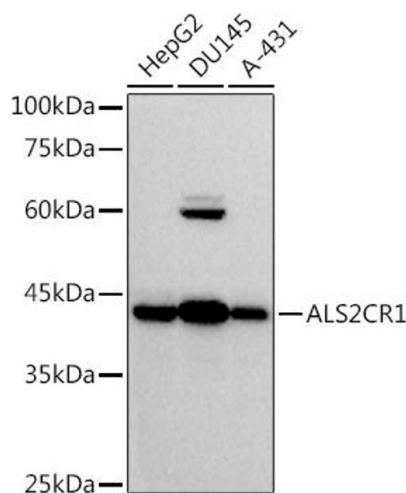
Preservative: Sodium azide

Precaution of Use: This product contains Sodium azide: a POISONOUS AND HAZARDOUS SUBSTANCE which should be handled by trained staff only.

Storage: -20 °C

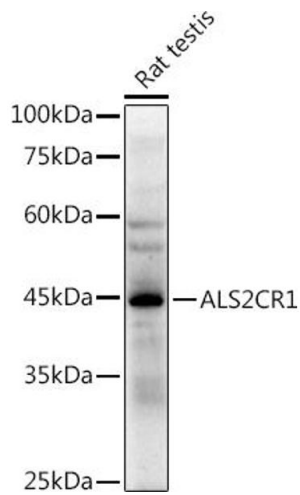
Storage Comment: Store at -20°C. Avoid freeze / thaw cycles.

Images



Western Blotting

Image 1. Western blot analysis of extracts of various cell lines, using (ABIN7268912) at 1:500 dilution. Secondary antibody: HRP Goat Anti-Rabbit IgG (H+L) (ABIN1684268 and ABIN3020597) at 1:10000 dilution. Lysates/proteins: 25 µg per lane. Blocking buffer: 3 % nonfat dry milk in TBST. Detection: ECL Basic Kit (RM00020). Exposure time: 10s.



Western Blotting

Image 2. Western blot analysis of extracts of Rat testis, using (ABIN7268912) at 1:500 dilution. Secondary antibody: HRP Goat Anti-Rabbit IgG (H+L) (ABIN1684268 and ABIN3020597) at 1:10000 dilution. Lysates/proteins: 25 µg per lane. Blocking buffer: 3% nonfat dry milk in TBST. Detection: ECL Enhanced Kit (RM00021). Exposure time: 90s.