

Datasheet for ABIN7268915  
**anti-NEK2 antibody**



[Go to Product page](#)

1 Image

## Overview

Quantity:	100 µL
Target:	NEK2
Reactivity:	Human
Host:	Rabbit
Clonality:	Monoclonal
Conjugate:	This NEK2 antibody is un-conjugated
Application:	Western Blotting (WB)

## Product Details

Purpose:	NEK2 Rabbit mAb
Immunogen:	A synthesized peptide derived from human NEK2
Isotype:	IgG
Cross-Reactivity:	Human, Mouse, Rat
Characteristics:	Monoclonal Antibodies
Purification:	Affinity purification

## Target Details

Target:	NEK2
Alternative Name:	NEK2 ( <a href="#">NEK2 Products</a> )
Background:	This gene encodes a serine/threonine-protein kinase that is involved in mitotic regulation. This

## Target Details

protein is localized to the centrosome, and undetectable during G1 phase, but accumulates progressively throughout the S phase, reaching maximal levels in late G2 phase. Alternatively spliced transcript variants encoding different isoforms with distinct C-termini have been noted for this gene. [provided by RefSeq, Feb 2011],HsPK21, NEK2A, NLK1, PPP1R111, RP67,Cancer,Cell Biology & Developmental Biology,Cell Cycle,Cell Cycle\_Centrosome,Kinase,Signal Transduction,NEK2

Molecular Weight: 48/44kDa

Gene ID: 4751

UniProt: [P51955](#)

Pathways: [M Phase](#)

## Application Details

Application Notes: WB,1:500 - 1:2000

Restrictions: For Research Use only

## Handling

Format: Liquid

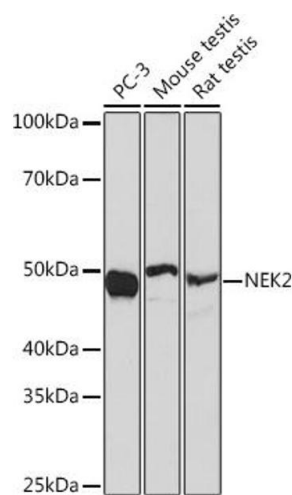
Buffer: PBS with 0.02 % sodium azide,0.05 % BSA,50 % glycerol, pH 7.3.

Preservative: Sodium azide

Precaution of Use: This product contains Sodium azide: a POISONOUS AND HAZARDOUS SUBSTANCE which should be handled by trained staff only.

Storage: -20 °C

Storage Comment: Store at -20°C. Avoid freeze / thaw cycles.



Western Blotting

**Image 1.** Western blot analysis of extracts of various cell lines, using NEK2 Rabbit mAb (ABIN7268915) at 1:1000 dilution. Secondary antibody: HRP Goat Anti-Rabbit IgG (H+L) (ABIN1684268 and ABIN3020597) at 1:10000 dilution. Lysates/proteins: 25 µg per lane. Blocking buffer: 3 % nonfat dry milk in TBST. Detection: ECL Basic Kit (RM00020). Exposure time: 30s.