



[Go to Product page](#)

Datasheet for ABIN7268923
anti-Nitrilase 1 antibody (AA 1-150)

1 Image

Overview

Quantity:	100 µL
Target:	Nitrilase 1 (NIT1)
Binding Specificity:	AA 1-150
Reactivity:	Human
Host:	Rabbit
Clonality:	Polyclonal
Conjugate:	This Nitrilase 1 antibody is un-conjugated
Application:	Western Blotting (WB)

Product Details

Purpose:	NIT1 Rabbit pAb
Immunogen:	Recombinant fusion protein containing a sequence corresponding to amino acids 1-150 of human NIT1 (NP_001172021.1).
Sequence:	MLGFITRPPH RFLSLLCPGL RIPQLSVLCA QPRPRAMAISSSCELPLVA VCQVTSTPDK QQNFKTCAEL VREAARLGAC LAFLPEAFDF IARDPAETLH LSEPLGGKLL EEYTLQAREC GLWLSLGGFH ERGQDWEQTQ KIYNCHVLLN
Isotype:	IgG
Cross-Reactivity:	Rat
Characteristics:	Polyclonal Antibodies
Purification:	Affinity purification

Target Details

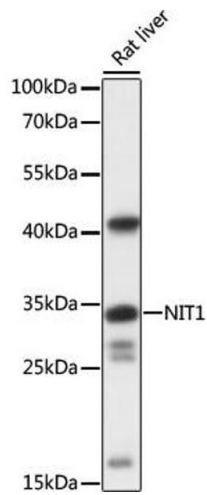
Target:	Nitrilase 1 (NIT1)
Alternative Name:	NIT1 (NIT1 Products)
Background:	This gene encodes a member of the nitrilase protein family with homology to bacterial and plant nitrilases, enzymes that cleave nitriles and organic amides to the corresponding carboxylic acids plus ammonia. Multiple transcript variants encoding different isoforms have been found for this gene.,NIT1,Cancer,Tumor suppressors,Cell Biology & Developmental Biology,Apoptosis,NIT1
Molecular Weight:	26kDa/31kDa/34kDa/35kDa/40kDa
Gene ID:	4817
UniProt:	Q86X76

Application Details

Application Notes:	WB,1:500 - 1:2000
Restrictions:	For Research Use only

Handling

Format:	Liquid
Buffer:	PBS with 0.02 % sodium azide,50 % glycerol, pH 7.3.
Preservative:	Sodium azide
Precaution of Use:	This product contains Sodium azide: a POISONOUS AND HAZARDOUS SUBSTANCE which should be handled by trained staff only.
Storage:	-20 °C
Storage Comment:	Store at -20°C. Avoid freeze / thaw cycles.



Western Blotting

Image 1. Western blot analysis of extracts of rat liver, using NIT1 antibody (ABIN7268923) at 1:1000 dilution. Secondary antibody: HRP Goat Anti-Rabbit IgG (H+L) (ABIN1684268 and ABIN3020597) at 1:10000 dilution. Lysates/proteins: 25 µg per lane. Blocking buffer: 3% nonfat dry milk in TBST. Detection: ECL Basic Kit (RM00020). Exposure time: 1s.