



[Go to Product page](#)

Datasheet for ABIN7268926
anti-Nkx2-2 antibody (AA 1-130)

1 Image

Overview

Quantity:	100 µL
Target:	Nkx2-2
Binding Specificity:	AA 1-130
Reactivity:	Human
Host:	Rabbit
Clonality:	Polyclonal
Conjugate:	This Nkx2-2 antibody is un-conjugated
Application:	Western Blotting (WB)

Product Details

Purpose:	NKX2-2 Rabbit pAb
Immunogen:	Recombinant fusion protein containing a sequence corresponding to amino acids 1-130 of human NKX2-2 (NP_002500.1).
Sequence:	MSLTNKTGTF SVKDILDLPD TNDEEGSVAE GPEEENEGPE PAKRAGPLGQ GALDAVQSLP LKNPFYDSSD NPYTRWLAST EGLQYSLHGL AAGAPPQDSS SKSPEPSADE SPDNDKETPG GGGDAGKKRK
Isotype:	IgG
Cross-Reactivity:	Human, Mouse, Rat
Characteristics:	Polyclonal Antibodies
Purification:	Affinity purification

Target Details

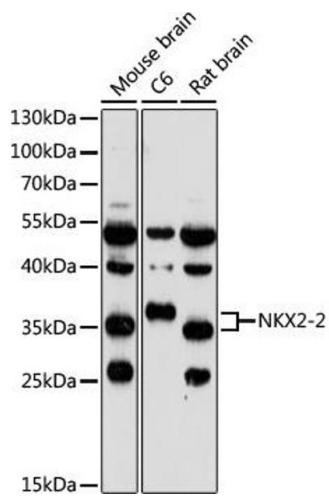
Target:	Nkx2-2
Alternative Name:	NKX2-2 (Nkx2-2 Products)
Background:	The protein encoded by this gene contains a homeobox domain and may be involved in the morphogenesis of the central nervous system. This gene is found on chromosome 20 near NKX2-4, and these two genes appear to be duplicated on chromosome 14 in the form of TITF1 and NKX2-8. The encoded protein is likely to be a nuclear transcription factor.,NKX2-2,NKX2.2,NKX2B,Epigenetics & Nuclear Signaling,Transcription Factors,Cell Biology & Developmental Biology,Neuroscience,Stem Cells,NKX2-2
Molecular Weight:	30kDa
Gene ID:	4821
UniProt:	O95096
Pathways:	Dopaminergic Neurogenesis

Application Details

Application Notes:	WB,1:500 - 1:2000
Restrictions:	For Research Use only

Handling

Format:	Liquid
Buffer:	PBS with 0.02 % sodium azide,50 % glycerol, pH 7.3.
Preservative:	Sodium azide
Precaution of Use:	This product contains Sodium azide: a POISONOUS AND HAZARDOUS SUBSTANCE which should be handled by trained staff only.
Storage:	-20 °C
Storage Comment:	Store at -20°C. Avoid freeze / thaw cycles.



Western Blotting

Image 1. Western blot analysis of extracts of various cell lines, using NKX2-2 antibody (ABIN7268926) at 1:1000 dilution. Secondary antibody: HRP Goat Anti-Rabbit IgG (H+L) (ABIN1684268 and ABIN3020597) at 1:10000 dilution. Lysates/proteins: 25 µg per lane. Blocking buffer: 3 % nonfat dry milk in TBST. Detection: ECL Basic Kit (RM00020). Exposure time: 5 min.