

Datasheet for ABIN7268928

anti-NKX3-1 antibody

3 Images



[Go to Product page](#)

Overview

| | |
|--------------|--|
| Quantity: | 100 µL |
| Target: | NKX3-1 |
| Reactivity: | Human |
| Host: | Rabbit |
| Clonality: | Polyclonal |
| Conjugate: | This NKX3-1 antibody is un-conjugated |
| Application: | Western Blotting (WB), Immunofluorescence (IF) |

Product Details

| | |
|-------------------|--------------------------------------|
| Purpose: | NKX3.1 Rabbit pAb |
| Immunogen: | Recombinant protein of human NKX3.1. |
| Isotype: | IgG |
| Cross-Reactivity: | Human, Mouse |
| Characteristics: | Polyclonal Antibodies |
| Purification: | Affinity purification |

Target Details

| | |
|-------------------|---|
| Target: | NKX3-1 |
| Alternative Name: | NKX3-1 (NKX3-1 Products) |
| Background: | This gene encodes a homeobox-containing transcription factor. This transcription factor |

Target Details

functions as a negative regulator of epithelial cell growth in prostate tissue. Aberrant expression of this gene is associated with prostate tumor progression. Alternate splicing results in multiple transcript variants of this gene. [provided by RefSeq, Jan 2012],BAPX2, NKX3, NKX3.1, NKX3A,Epigenetics & Nuclear Signaling,Transcription Factors,NKX3-1

Molecular Weight: 32kDa

Gene ID: 4824

UniProt: [Q99801](#)

Pathways: [Intracellular Steroid Hormone Receptor Signaling Pathway](#), [Positive Regulation of Endopeptidase Activity](#), [Positive Regulation of Response to DNA Damage Stimulus](#)

Application Details

Application Notes: WB,1:500 - 1:2000,IF,1:50 - 1:200

Restrictions: For Research Use only

Handling

Format: Liquid

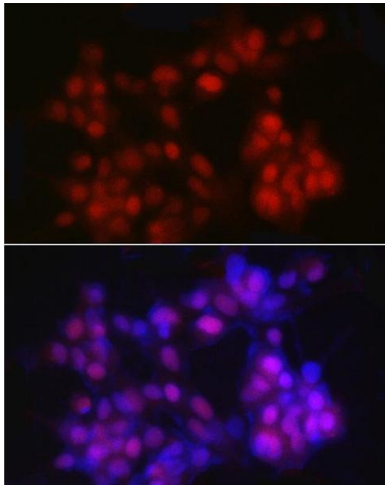
Buffer: PBS with 0.02 % sodium azide,0.05 % BSA,50 % glycerol, pH 7.3.

Preservative: Sodium azide

Precaution of Use: This product contains Sodium azide: a POISONOUS AND HAZARDOUS SUBSTANCE which should be handled by trained staff only.

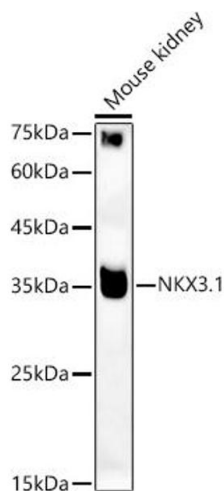
Storage: -20 °C

Storage Comment: Store at -20°C. Avoid freeze / thaw cycles.



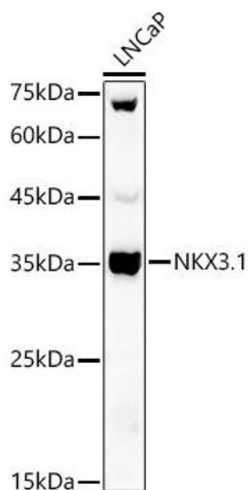
Immunofluorescence

Image 1. Immunofluorescence analysis of LNCaP cells using NKX3.1 Rabbit pAb (ABIN7268928) at dilution of 1:25 (40x lens). Blue: DAPI for nuclear staining.



Western Blotting

Image 2. Western blot analysis of extracts of Mouse kidney, using NKX3.1 antibody (ABIN7268928) at 1:400 dilution. Secondary antibody: HRP Goat Anti-Rabbit IgG (H+L) (ABIN1684268 and ABIN3020597) at 1:10028 dilution. Lysates/proteins: 53 µg per lane. Blocking buffer: 31 % nonfat dry milk in TBST. Detection: ECL Basic Kit (RM00048). Exposure time: 180s.



Western Blotting

Image 3. Western blot analysis of extracts of LNCaP cells, using NKX3.1 antibody (ABIN7268928) at 1:400 dilution. Secondary antibody: HRP Goat Anti-Rabbit IgG (H+L) (ABIN1684268 and ABIN3020597) at 1:10027 dilution. Lysates/proteins: 52 µg per lane. Blocking buffer: 30 % nonfat dry milk in TBST. Detection: ECL Basic Kit (RM00047). Exposure time: 30s.