



Datasheet for ABIN7268936
anti-NLRP10 antibody (AA 1-300)



[Go to Product page](#)

1 Image

Overview

Quantity:	100 µL
Target:	NLRP10
Binding Specificity:	AA 1-300
Reactivity:	Human
Host:	Rabbit
Clonality:	Polyclonal
Conjugate:	This NLRP10 antibody is un-conjugated
Application:	Western Blotting (WB), Immunofluorescence (IF)

Product Details

Purpose:	NLRP10 Rabbit pAb
Immunogen:	Recombinant fusion protein containing a sequence corresponding to amino acids 1-300 of human NLRP10 (NP_789791.1).
Sequence:	MAMAKARKPR EALLWALSDL EENDFKKLF YLRDRTLSEG QPPLARGELE GLIPVDLAEL LISKYGEKEA VKVVLKGLKV MNLLELVDQL SHICLHDYRE VYREHVRCL EEWQEAGVNGR YNQVLLVAKP SSESPELAC PFPEQELESV TVEALFDSGE KPSLAPSLVV LQGSAGTGKT TLARKMVL DW ATGTLYPGRF DYVFYVSCKE VLLLESKLE QLLFWCCGDN QAPVTEILRQ PERLLFILDG FDELQRPFEE KLKKRGLSPK ESSLHLLIRR HTLPTCSLLI TTRPLALRNL
Isotype:	IgG
Cross-Reactivity:	Human, Mouse, Rat
Characteristics:	Polyclonal Antibodies

Product Details

Purification: Affinity purification

Target Details

Target: NLRP10

Alternative Name: NLRP10 ([NLRP10 Products](#))

Background: Members of the NALP protein family typically contain a NACHT domain, a NACHT-associated domain (NAD), a C-terminal leucine-rich repeat (LRR) region, and an N-terminal pyrin domain (PYD). The protein encoded by this gene belongs to the NALP protein family despite lacking the LRR region. This protein likely plays a regulatory role in the innate immune system. The protein belongs to the signal-induced multiprotein complex, the inflammasome, that activates the pro-inflammatory caspases, caspase-1 and caspase-5. Other experiments indicate that this gene acts as a multifunctional negative regulator of inflammation and apoptosis.,NLRP10,CLR11.1,NALP10,NOD8,PAN5,PYNOD,Cell Biology & Developmental Biology,Apoptosis,Caspases,Immunology & Inflammation,Cytokines,Interleukins,Cell Intrinsic Innate Immunity Signaling Pathway,NLRP10

Molecular Weight: 75kDa

Gene ID: 338322

UniProt: [Q86W26](#)

Pathways: [Inflammasome](#)

Application Details

Application Notes: WB,1:500 - 1:2000,IF,1:50 - 1:100

Restrictions: For Research Use only

Handling

Format: Liquid

Buffer: PBS with 0.02 % sodium azide,50 % glycerol, pH 7.3.

Preservative: Sodium azide

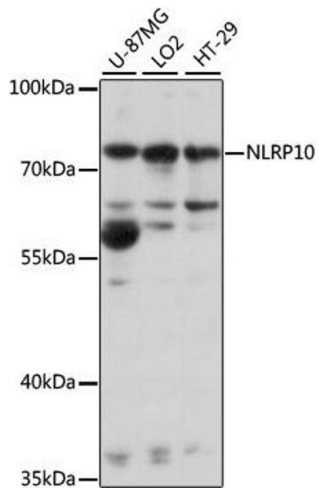
Precaution of Use: This product contains Sodium azide: a POISONOUS AND HAZARDOUS SUBSTANCE which should be handled by trained staff only.

Storage: -20 °C

Handling

Storage Comment: Store at -20°C. Avoid freeze / thaw cycles.

Images



Western Blotting

Image 1. Western blot analysis of extracts of various cell lines, using NLRP10 antibody (ABIN7268936) at 1:1000 dilution. Secondary antibody: HRP Goat Anti-Rabbit IgG (H+L) (ABIN1684268 and ABIN3020597) at 1:10000 dilution. Lysates/proteins: 25 µg per lane. Blocking buffer: 3 % nonfat dry milk in TBST. Detection: ECL Basic Kit (RM00020). Exposure time: 10s.