



[Go to Product page](#)

Datasheet for ABIN7268941  
**anti-NLRP6 antibody (AA 100-200)**

1 Image

Overview

Quantity:	100 µL
Target:	NLRP6
Binding Specificity:	AA 100-200
Reactivity:	Human
Host:	Rabbit
Clonality:	Polyclonal
Conjugate:	This NLRP6 antibody is un-conjugated
Application:	Western Blotting (WB)

Product Details

Purpose:	NLRP6 Rabbit pAb
Immunogen:	A synthetic peptide corresponding to a sequence within amino acids 100-200 of human NLRP6 (NP_001263629.1).
Sequence:	RRLQRLGLGS GTLLSVSEYK KKYREHVLQL HARVKERNAR SVKITKRFTK LLIAPESAAP EEAMGPAEEP EPGRARRSDT HTFNRLFRRD EEGRRPLTV L
Isotype:	IgG
Cross-Reactivity:	Human, Mouse, Rat
Characteristics:	Polyclonal Antibodies
Purification:	Affinity purification

## Target Details

---

Target:	NLRP6
Alternative Name:	NLRP6 ( <a href="#">NLRP6 Products</a> )
Background:	<p>The protein encoded by this gene binds arginine-vasopressin and may be involved in the arginine-vasopressin-mediated regulation of renal salt-water balance. The encoded protein also mediates inflammatory responses in the colon to allow recovery from intestinal epithelial damage and protects against tumorigenesis and the development of colitis. Finally, this protein can increase activation of NF-kappa-B, activation of CASP1 through interaction with ASC, and cAMP accumulation. Two transcript variants encoding different isoforms have been found for this gene.,NLRP6,AVR,CLR11.4,NALP6,NAVR,NAVR/AVR,PAN3,PYPAF5,Signal Transduction,Cell Biology &amp; Developmental Biology,Apoptosis,Caspases,Immunology &amp; Inflammation,Cell Intrinsic Innate Immunity Signaling Pathway,NLRP6</p>
Molecular Weight:	99kDa
Gene ID:	171389
UniProt:	<a href="#">P59044</a>
Pathways:	<a href="#">Inflammasome</a>

## Application Details

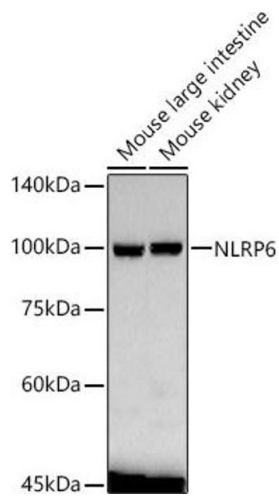
---

Application Notes:	WB,1:500 - 1:2000
Restrictions:	For Research Use only

## Handling

---

Format:	Liquid
Buffer:	PBS with 0.02 % sodium azide,50 % glycerol, pH 7.3.
Preservative:	Sodium azide
Precaution of Use:	This product contains Sodium azide: a POISONOUS AND HAZARDOUS SUBSTANCE which should be handled by trained staff only.
Storage:	-20 °C
Storage Comment:	Store at -20°C. Avoid freeze / thaw cycles.



### Western Blotting

**Image 1.** Western blot analysis of extracts of various cell lines, using NLRP6 antibody at 1:1570 dilution. Secondary antibody: HRP Goat Anti-Rabbit IgG (H+L) (ABIN1684268 and ABIN3020597) at 1:10018 dilution. Lysates/proteins: 43 µg per lane. Blocking buffer: 21 % nonfat dry milk in TBST. Detection: ECL Basic Kit (RM00038). Exposure time: 90s.