



[Go to Product page](#)

Datasheet for ABIN7268943  
**anti-NOMO2 antibody (AA 873-1222)**

1 Image

Overview

Quantity:	100 µL
Target:	NOMO2
Binding Specificity:	AA 873-1222
Reactivity:	Human
Host:	Rabbit
Clonality:	Polyclonal
Conjugate:	This NOMO2 antibody is un-conjugated
Application:	Western Blotting (WB)

Product Details

Purpose:	NOMO2 Rabbit pAb
Immunogen:	Recombinant fusion protein containing a sequence corresponding to amino acids 873-1222 of human NOMO2 (NP_001004060.1).
Sequence:	YALAGVSFEI KAEDDQPLPG VLLSLSGGLF RSNLLTQDNG ILTFSNLSPG QYYFKPMMKE FRFEPSSQMI EVQEGQNLKI TITGYRTAYS CYGTVSSLNG EPEQGVAMEA VGQNDCSIYG EDTVTDEEGK FRLRGLLPGC VYHVQLKAEG NDHIERALPH HRVIEVGNND IDDVNIIVFR QINQFDLSGN VITSSEYLPT LWVKLYKSEN LDNPIQTVSL GQSLFFHFPP LLRDGENYVW LLDSTLPRSQ YDYILPQVSF TAVGYHKHIT LIFNPTRKLP EQDIAQGSYI ALPLTLVL AGYNHDKLIP LLLQLTSRLQ GVGALGQAAS DNSGPEDAKR QAKKQKTRRT
Isotype:	IgG
Cross-Reactivity:	Human

## Product Details

---

Characteristics: Polyclonal Antibodies

Purification: Affinity purification

## Target Details

---

Target: NOMO2

Alternative Name: NOMO2 ([NOMO2 Products](#))

Background: This gene encodes a protein originally thought to be related to the collagenase gene family. This gene is one of three highly similar genes in a region of duplication located on the p arm of chromosome 16. These three genes encode closely related proteins that may have the same function. The protein encoded by one of these genes has been identified as part of a protein complex that participates in the Nodal signaling pathway during vertebrate development. Mutations in ABCC6, which is located nearby, rather than mutations in this gene are associated with pseudoxanthoma elasticum (PXE). Two transcripts encoding different isoforms have been described.,NOMO2,Nomo,PM5,NOMO2

Molecular Weight: 122kDa/134kDa/139kDa

Gene ID: 283820

UniProt: [Q5JPE7](#)

## Application Details

---

Application Notes: WB,1:500 - 1:2000

Restrictions: For Research Use only

## Handling

---

Format: Liquid

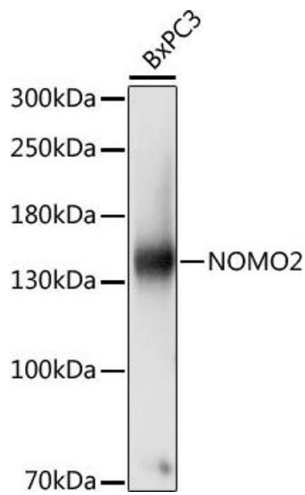
Buffer: PBS with 0.02 % sodium azide,50 % glycerol, pH 7.3.

Preservative: Sodium azide

Precaution of Use: This product contains Sodium azide: a POISONOUS AND HAZARDOUS SUBSTANCE which should be handled by trained staff only.

Storage: -20 °C

Storage Comment: Store at -20°C. Avoid freeze / thaw cycles.



### Western Blotting

**Image 1.** Western blot analysis of extracts of BxPC3 cells, using NOMO2 antibody (ABIN7268943) at 1:1000 dilution. Secondary antibody: HRP Goat Anti-Rabbit IgG (H+L) (ABIN1684268 and ABIN3020597) at 1:10000 dilution. Lysates/proteins: 25 µg per lane. Blocking buffer: 3 % nonfat dry milk in TBST. Detection: ECL Basic Kit (RM00020). Exposure time: 1s.