

Datasheet for ABIN7268946

anti-NME1 antibody[Go to Product page](#)**1** Image

Overview

Quantity:	100 µL
Target:	NME1
Reactivity:	Human
Host:	Rabbit
Clonality:	Monoclonal
Conjugate:	This NME1 antibody is un-conjugated
Application:	Western Blotting (WB)

Product Details

Purpose:	NME1/NM23A Rabbit mAb
Immunogen:	A synthesized peptide derived from human NME1/NME1/NM23A
Isotype:	IgG
Cross-Reactivity:	Human, Mouse, Rat
Characteristics:	Monoclonal Antibodies
Purification:	Affinity purification

Target Details

Target:	NME1
Alternative Name:	NME1 (NME1 Products)
Background:	This gene (NME1) was identified because of its reduced mRNA transcript levels in highly

Target Details

metastatic cells. Nucleoside diphosphate kinase (NDK) exists as a hexamer composed of 'A' (encoded by this gene) and 'B' (encoded by NME2) isoforms. Mutations in this gene have been identified in aggressive neuroblastomas. Two transcript variants encoding different isoforms have been found for this gene. Co-transcription of this gene and the neighboring downstream gene (NME2) generates naturally-occurring transcripts (NME1-NME2), which encodes a fusion protein comprised of sequence sharing identity with each individual gene product. [provided by RefSeq, Jul 2008],AWD, GAAD, NB, NBS, NDKA, NDPK-A, NDPKA, NM23, NM23-H1,Apoptosis,Cancer,Cell Biology & Developmental Biology,Epigenetics & Nuclear Signaling,Neurodegenerative Diseases Markers,Neurodegenerative Diseases_Cerebralvascular accident,CVA,Neuroscience,Other Neurological disorders,RNA Binding,Tumor suppressors,NME1

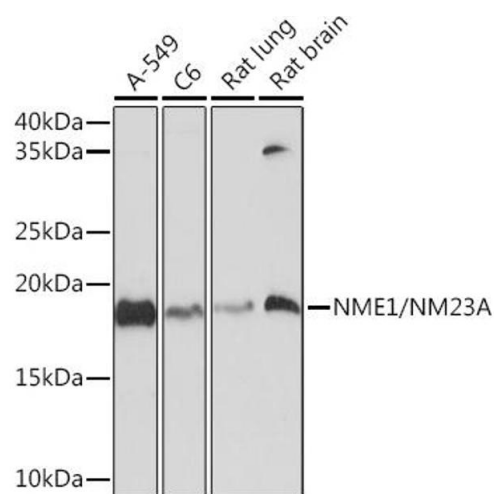
Molecular Weight:	17kDa
Gene ID:	4830
UniProt:	P15531
Pathways:	Apoptosis , Nucleotide Phosphorylation , Carbohydrate Homeostasis , Ribonucleoside Biosynthetic Process

Application Details

Application Notes:	WB,1:500 - 1:2000
Restrictions:	For Research Use only

Handling

Format:	Liquid
Buffer:	PBS with 0.02 % sodium azide,0.05 % BSA,50 % glycerol, pH 7.3.
Preservative:	Sodium azide
Precaution of Use:	This product contains Sodium azide: a POISONOUS AND HAZARDOUS SUBSTANCE which should be handled by trained staff only.
Storage:	-20 °C
Storage Comment:	Store at -20°C. Avoid freeze / thaw cycles.



Western Blotting

Image 1. Western blot analysis of extracts of various cell lines, using NME1/NM23A Rabbit mAb (ABIN7268946) at 1:1000 dilution. Secondary antibody: HRP Goat Anti-Rabbit IgG (H+L) (ABIN1684268 and ABIN3020597) at 1:10000 dilution. Lysates/proteins: 25 µg per lane. Blocking buffer: 3 % nonfat dry milk in TBST. Detection: ECL Basic Kit (RM00020). Exposure time: 90s.