



[Go to Product page](#)

Datasheet for ABIN7268961  
**anti-NOTUM antibody (AA 20-320)**

1 Image

Overview

Quantity:	100 µL
Target:	NOTUM
Binding Specificity:	AA 20-320
Reactivity:	Human
Host:	Rabbit
Clonality:	Polyclonal
Conjugate:	This NOTUM antibody is un-conjugated
Application:	Western Blotting (WB)

Product Details

Purpose:	NOTUM Rabbit pAb
Immunogen:	Recombinant fusion protein containing a sequence corresponding to amino acids 20-320 of human NOTUM (NP_848588.3).
Sequence:	SEGRKTWRRR GQQPPPPPT EAAPAAGQPV ESFPLDFTAV EGNMDSFMAQ VKSLAQSLYP CSAQLNEDL RLHLLNLSV TCNDGSPAGY YLKESRGSRR WLLFLEGGWY CFNRENCDSR YDTMRRLMSS RDWPRTRTGT GILSSQPEEN PYWWNANMVF IPYCSSDVWS GASSKSEKNE YAFMGALIQ EVVRELLGRG LSGAKVLLLA GSSAGGTGVL LNVDRVAEQL EKLGYPAIQV RGLADSGWFL DNKQYRHTDC VDTITCAPTE AIRRGIRYWN GVVPERCRRQ FQEGEEWNCF F
Isotype:	IgG
Cross-Reactivity:	Human
Characteristics:	Polyclonal Antibodies

## Product Details

---

Purification: Affinity purification

## Target Details

---

Target: NOTUM

Alternative Name: NOTUM ([NOTUM Products](#))

Background: Carboxylesterase that acts as a key negative regulator of the Wnt signaling pathway by specifically mediating depalmitoleoylation of WNT proteins. Serine palmitoleoylation of WNT proteins is required for efficient binding to frizzled receptors.,NOTUM,hNOTUM,Neuroscience,NOTUM

Molecular Weight: 55kDa

Gene ID: 147111

UniProt: [Q6P988](#)

## Application Details

---

Application Notes: WB,1:500 - 1:2000

Restrictions: For Research Use only

## Handling

---

Format: Liquid

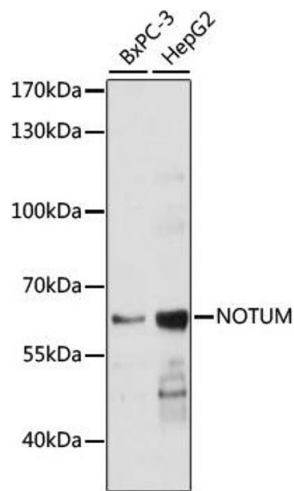
Buffer: PBS with 0.02 % sodium azide,50 % glycerol, pH 7.3.

Preservative: Sodium azide

Precaution of Use: This product contains Sodium azide: a POISONOUS AND HAZARDOUS SUBSTANCE which should be handled by trained staff only.

Storage: -20 °C

Storage Comment: Store at -20°C. Avoid freeze / thaw cycles.



### Western Blotting

**Image 1.** Western blot analysis of extracts of various cell lines, using NOTUM antibody (ABIN7268961) at 1:1000 dilution. Secondary antibody: HRP Goat Anti-Rabbit IgG (H+L) (ABIN1684268 and ABIN3020597) at 1:10000 dilution. Lysates/proteins: 25 µg per lane. Blocking buffer: 3 % nonfat dry milk in TBST. Detection: ECL Basic Kit (RM00020). Exposure time: 1s.