



[Go to Product page](#)

Datasheet for ABIN7268964
anti-NSA2 antibody (AA 1-260)

1 Image

Overview

Quantity:	100 µL
Target:	NSA2
Binding Specificity:	AA 1-260
Reactivity:	Human
Host:	Rabbit
Clonality:	Polyclonal
Conjugate:	This NSA2 antibody is un-conjugated
Application:	Western Blotting (WB)

Product Details

Purpose:	NSA2 Rabbit pAb
Immunogen:	Recombinant fusion protein containing a sequence corresponding to amino acids 1-260 of human NSA2 (NP_055701.1).
Sequence:	MPQNEYIELH RKRYGYRLDY HEKKRKKESR EAHERSKKAK KMIGLKAKLY HKQRHAEKIQ MKKTIKMHEK RNTKQKNDEK TPQGAVPAYL LDREGQSRK VLSNMIKQKR KEKAGKWEVP LPKVRAQGET EVLKVIRTGK RKKKAWKRMV TKVCFVGDGF TRKPPKYERF IRPMGLRFKK AHVTHPELKA TFCLPILGVK KNPSSPLYTT LGVITKGTVI EVNVSELGLV TQGGKVIWVK YAQVTNNPEN DGCINAVLLV
Isotype:	IgG
Cross-Reactivity:	Human, Mouse, Rat
Characteristics:	Polyclonal Antibodies

Product Details

Purification: Affinity purification

Target Details

Target: NSA2

Alternative Name: NSA2 ([NSA2 Products](#))

Background: This gene encodes a nucleolar protein involved in cell cycle regulation and proliferation. This gene was identified based on sequence similarity to a highly conserved *Saccharomyces cerevisiae* gene encoding a pre-ribosomal protein, which is involved in large ribosomal subunit biogenesis. The encoded protein is found at elevated levels in diabetic nephropathy. Alternative splicing results in multiple transcript variants. Several related pseudogenes have been identified.,NSA2,CDK105,HCL-G1,HCLG1,HUSSY-29,HUSSY29,TINP1,Epigenetics & Nuclear Signaling,NSA2

Molecular Weight: 30kDa

Gene ID: 10412

UniProt: [O95478](#)

Application Details

Application Notes: WB,1:500 - 1:2000

Restrictions: For Research Use only

Handling

Format: Liquid

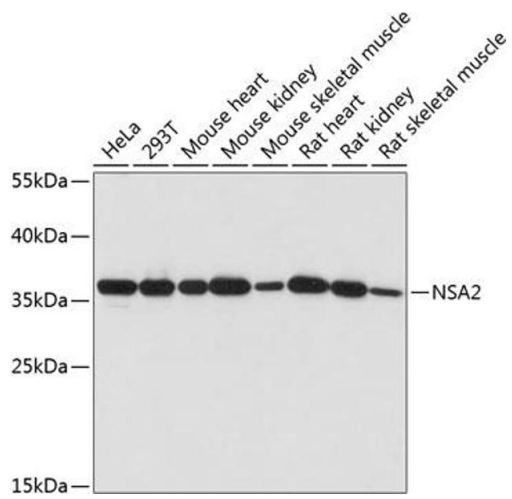
Buffer: PBS with 0.02 % sodium azide,50 % glycerol, pH 7.3.

Preservative: Sodium azide

Precaution of Use: This product contains Sodium azide: a POISONOUS AND HAZARDOUS SUBSTANCE which should be handled by trained staff only.

Storage: -20 °C

Storage Comment: Store at -20°C. Avoid freeze / thaw cycles.



Western Blotting

Image 1. Western blot analysis of extracts of various cell lines, using NS antibody (ABIN7268964) at 1:1000 dilution. Secondary antibody: HRP Goat Anti-Rabbit IgG (H+L) (ABIN1684268 and ABIN3020597) at 1:10000 dilution. Lysates/proteins: 25 µg per lane. Blocking buffer: 3 % nonfat dry milk in TBST. Detection: ECL Basic Kit (RM00020). Exposure time: 60s.