



[Go to Product page](#)

Datasheet for ABIN7269038
anti-NPM3 antibody (AA 30-140)

1 Image

Overview

Quantity:	100 µL
Target:	NPM3
Binding Specificity:	AA 30-140
Reactivity:	Human
Host:	Rabbit
Clonality:	Polyclonal
Conjugate:	This NPM3 antibody is un-conjugated
Application:	Western Blotting (WB)

Product Details

Purpose:	NPM3 Rabbit pAb
Immunogen:	Recombinant fusion protein containing a sequence corresponding to amino acids 30-140 of human NPM3 (NP_008924.1).
Sequence:	APVTMDSFFF GCELSGHTRS FTFKVEEEDD AEHVLALTML CLTEGAKDEC NVVEVARNH DHQEIAVPVA NLKLSCQPML SLDDFQLQPP VTFRLKSGSG PVRITGRHQI V
Isotype:	IgG
Cross-Reactivity:	Human
Characteristics:	Polyclonal Antibodies
Purification:	Affinity purification

Target Details

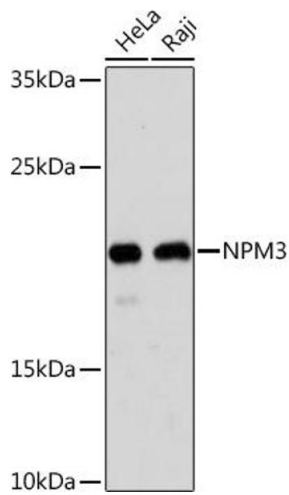
Target:	NPM3
Alternative Name:	NPM3 (NPM3 Products)
Background:	<p>The protein encoded by this gene is related to the nuclear chaperone phosphoproteins, nucleoplasmin and nucleophosmin. This protein is strongly expressed in diverse cell types where it localizes primarily to the nucleus. Based on its similarity to nucleoplasmin and nucleophosmin, this protein likely functions as a molecular chaperone in the cell nucleus.</p> <p>[provided by RefSeq, Oct 2008],NPM3,PORMIN,TMEM123,Epigenetics & Nuclear Signaling,RNA Binding,Signal Transduction,NPM3</p>
Molecular Weight:	19kDa
Gene ID:	10360
UniProt:	O75607

Application Details

Application Notes:	WB,1:500 - 1:2000
Restrictions:	For Research Use only

Handling

Format:	Liquid
Buffer:	PBS with 0.02 % sodium azide,50 % glycerol, pH 7.3.
Preservative:	Sodium azide
Precaution of Use:	This product contains Sodium azide: a POISONOUS AND HAZARDOUS SUBSTANCE which should be handled by trained staff only.
Storage:	-20 °C
Storage Comment:	Store at -20°C. Avoid freeze / thaw cycles.



Western Blotting

Image 1. Western blot analysis of extracts of various cell lines, using NPM3 Rabbit pAb (ABIN7269038) at 1:1000 dilution. Secondary antibody: HRP Goat Anti-Rabbit IgG (H+L) (ABIN1684268 and ABIN3020597) at 1:10000 dilution. Lysates/proteins: 25 µg per lane. Blocking buffer: 3 % nonfat dry milk in TBST. Detection: ECL Basic Kit (RM00020). Exposure time: 90s.