



[Go to Product page](#)

Datasheet for ABIN7269043  
**anti-NUP43 antibody (AA 150-260)**

1 Image

Overview

Quantity:	100 µL
Target:	NUP43
Binding Specificity:	AA 150-260
Reactivity:	Human
Host:	Rabbit
Clonality:	Polyclonal
Conjugate:	This NUP43 antibody is un-conjugated
Application:	Western Blotting (WB)

Product Details

Purpose:	NUP43 Rabbit pAb
Immunogen:	Recombinant fusion protein containing a sequence corresponding to amino acids 150-260 of human NUP43 (NP_942590.1).
Sequence:	DGRINLFRAD HKEAVRTIDN ADSSTLHAVT FLRTPEILTV NSIGQLKIWD FRQQGNEPSQ ILSLTGDRVP LHCVDRHPNQ QHVVATGGQD GMLSIWDVVRQ GTMPVSLLKA H
Isotype:	IgG
Cross-Reactivity:	Human, Rat
Characteristics:	Polyclonal Antibodies
Purification:	Affinity purification

## Target Details

---

Target:	NUP43
Alternative Name:	NUP43 ( <a href="#">NUP43 Products</a> )
Background:	Bidirectional transport of macromolecules between the cytoplasm and nucleus occurs through nuclear pore complexes (NPCs) embedded in the nuclear envelope. NPCs are composed of subcomplexes, and NUP43 is part of one such subcomplex, Nup107-160 (Loiodice et al., 2004 [PubMed 15146057]).,NUP43,bA350J20.1,p42,Epigenetics & Nuclear Signaling,Nuclear Receptor Signaling,Signal Transduction,NUP43
Molecular Weight:	31kDa/42kDa
Gene ID:	348995
UniProt:	<a href="#">Q8NFH3</a>

## Application Details

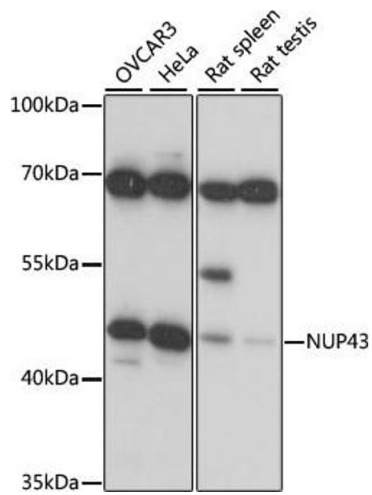
---

Application Notes:	WB,1:500 - 1:2000
Restrictions:	For Research Use only

## Handling

---

Format:	Liquid
Buffer:	PBS with 0.02 % sodium azide,50 % glycerol, pH 7.3.
Preservative:	Sodium azide
Precaution of Use:	This product contains Sodium azide: a POISONOUS AND HAZARDOUS SUBSTANCE which should be handled by trained staff only.
Storage:	-20 °C
Storage Comment:	Store at -20°C. Avoid freeze / thaw cycles.



### Western Blotting

**Image 1.** Western blot analysis of extracts of various cell lines, using NUP43 antibody (ABIN7269043) at 1:1000 dilution. Secondary antibody: HRP Goat Anti-Rabbit IgG (H+L) (ABIN1684268 and ABIN3020597) at 1:10000 dilution. Lysates/proteins: 25 µg per lane. Blocking buffer: 3 % nonfat dry milk in TBST. Detection: ECL Basic Kit (RM00020). Exposure time: 3s.