

Datasheet for ABIN7269060

anti-NAP1L1 antibody

5 Images

[Go to Product page](#)

Overview

Quantity:	100 µL
Target:	NAP1L1
Reactivity:	Human
Host:	Rabbit
Clonality:	Monoclonal
Conjugate:	This NAP1L1 antibody is un-conjugated
Application:	Western Blotting (WB), Immunofluorescence (IF)

Product Details

Purpose:	NAP1L1 Rabbit mAb
Immunogen:	A synthesized peptide derived from human NAP1L1
Isotype:	IgG
Cross-Reactivity:	Human, Mouse, Rat
Characteristics:	Monoclonal Antibodies
Purification:	Affinity purification

Target Details

Target:	NAP1L1
Alternative Name:	NAP1L1 (NAP1L1 Products)
Background:	This gene encodes a member of the nucleosome assembly protein (NAP) family. This protein

Target Details

participates in DNA replication and may play a role in modulating chromatin formation and contribute to the regulation of cell proliferation. Alternative splicing results in multiple transcript variants encoding different isoforms, however, not all have been fully described. [provided by RefSeq, Apr 2015],NAP1, NAP1L, NRP,Chromatin Remodeling,Epigenetics & Nuclear Signaling,NAP1L1

Molecular Weight: 52,60kDa

Gene ID: 4673

UniProt: [P55209](#)

Application Details

Application Notes: WB,1:500 - 1:2000,IF,1:50 - 1:200

Restrictions: For Research Use only

Handling

Format: Liquid

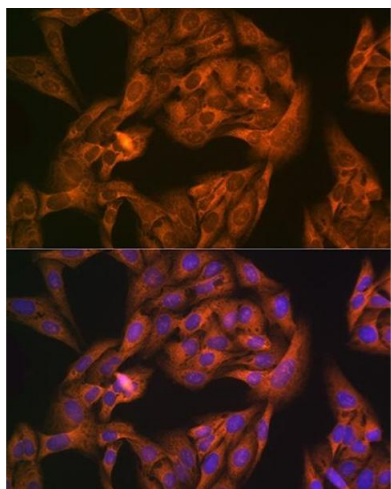
Buffer: PBS with 0.02 % sodium azide,0.05 % BSA,50 % glycerol, pH 7.3.

Preservative: Sodium azide

Precaution of Use: This product contains Sodium azide: a POISONOUS AND HAZARDOUS SUBSTANCE which should be handled by trained staff only.

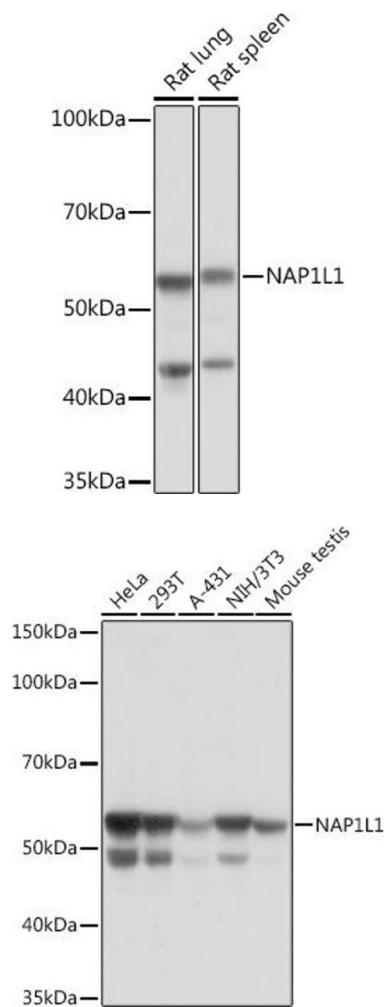
Storage: -20 °C

Storage Comment: Store at -20°C. Avoid freeze / thaw cycles.



Immunofluorescence

Image 1. Immunofluorescence analysis of U-2 OS cells using NL1 Rabbit mAb (ABIN7269060) at dilution of 1:100 (40x lens). Blue: DAPI for nuclear staining.



Western Blotting

Image 2. Western blot analysis of extracts of various cell lines, using NL1 Rabbit mAb (ABIN7269060) at 1:1000 dilution. Secondary antibody: HRP Goat Anti-Rabbit IgG (H+L) (ABIN1684268 and ABIN3020597) at 1:10000 dilution. Lysates/proteins: 25 µg per lane. Blocking buffer: 3 % nonfat dry milk in TBST. Detection: ECL Basic Kit (RM00020). Exposure time: 1 min.

Western Blotting

Image 3. Western blot analysis of extracts of various cell lines, using NL1 Rabbit mAb (ABIN7269060) at 1:1000 dilution. Secondary antibody: HRP Goat Anti-Rabbit IgG (H+L) (ABIN1684268 and ABIN3020597) at 1:10000 dilution. Lysates/proteins: 25 µg per lane. Blocking buffer: 3 % nonfat dry milk in TBST. Detection: ECL Basic Kit (RM00020). Exposure time: 10s.

Please check the [product details page](#) for more images. Overall 5 images are available for ABIN7269060.