



[Go to Product page](#)

Datasheet for ABIN7269065
anti-NOD2 antibody (AA 611-910)

5 Images

Overview

Quantity:	100 µL
Target:	NOD2
Binding Specificity:	AA 611-910
Reactivity:	Human
Host:	Rabbit
Clonality:	Polyclonal
Conjugate:	This NOD2 antibody is un-conjugated
Application:	Western Blotting (WB), Immunohistochemistry (IHC), Immunofluorescence (IF)

Product Details

Purpose:	NOD2 Rabbit pAb
Immunogen:	Recombinant fusion protein containing a sequence corresponding to amino acids 611-910 of human NOD2 (NP_071445.1).
Sequence:	AAFYLALSAD VPPALLRHLF NCGRPGNSPM ARLLPTMCIQ ASEGKDSSVA ALLQKAEPHN LQITAAFLAG LLSREHWGLL AECQTSEKAL LRRQACARWC LARSLRKHFH SIPPAAPGEA KSVHAMPGFI WLIRSLYEMQ EERLARKAAR GLNVGHLKLT FCSVGPTTECA ALAFVLQHLLR RPVALQLDYN SVGDIGVEQL LPCLGVCKAL YLRDNNISDR GICKLIECAL HCEQLQKLAL FNNKLDGCA HSMAKLLACR QNFLALRLGN NYITAAGAQV LAEGLRGNTS LQFLGFWGNR
Isotype:	IgG
Cross-Reactivity:	Human, Mouse, Rat
Characteristics:	Polyclonal Antibodies

Product Details

Purification: Affinity purification

Target Details

Target: NOD2

Alternative Name: NOD2 ([NOD2 Products](#))

Background: This gene is a member of the Nod1/Apaf-1 family and encodes a protein with two caspase recruitment (CARD) domains and six leucine-rich repeats (LRRs). The protein is primarily expressed in the peripheral blood leukocytes. It plays a role in the immune response to intracellular bacterial lipopolysaccharides (LPS) by recognizing the muramyl dipeptide (MDP) derived from them and activating the NFkB protein. Mutations in this gene have been associated with Crohn disease and Blau syndrome. Alternatively spliced transcript variants encoding distinct isoforms have been found for this gene.,NOD2,ACUG,BLAU,BLAUS,CARD15,CD,CLR16.3,IBD1,NLRC2,NOD2B,PSORAS1,YAOS,Cell Biology & Developmental Biology,Apoptosis,Caspases,NOD2

Molecular Weight: 22kDa/112kDa/115kDa

Gene ID: 64127

UniProt: [Q9HC29](#)

Pathways: [Activation of Innate immune Response](#), [Cellular Response to Molecule of Bacterial Origin](#), [Regulation of Leukocyte Mediated Immunity](#), [Positive Regulation of Immune Effector Process](#), [Production of Molecular Mediator of Immune Response](#), [Toll-Like Receptors Cascades](#), [Inflammasome](#)

Application Details

Application Notes: WB,1:500 - 1:2000,IHC,1:50 - 1:200,IF,1:50 - 1:200

Restrictions: For Research Use only

Handling

Format: Liquid

Buffer: PBS with 0.02 % sodium azide,50 % glycerol, pH 7.3.

Preservative: Sodium azide

Precaution of Use: This product contains Sodium azide: a POISONOUS AND HAZARDOUS SUBSTANCE which

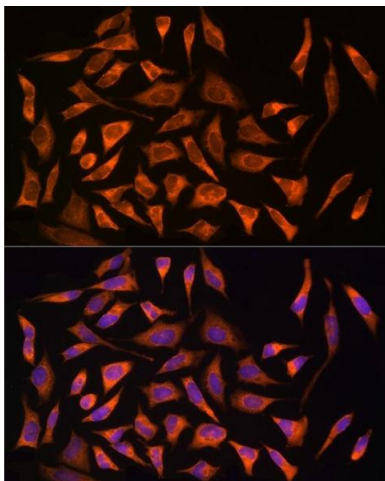
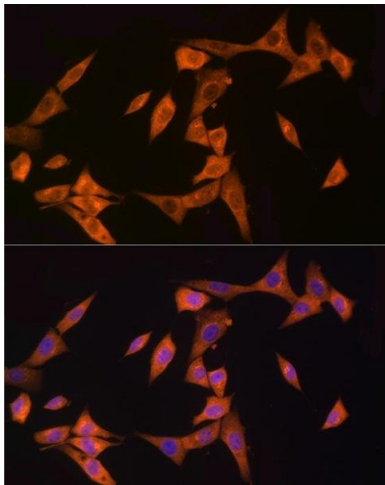
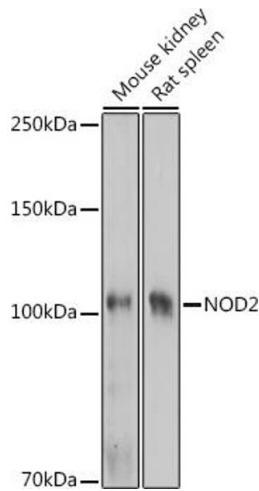
Handling

should be handled by trained staff only.

Storage: -20 °C

Storage Comment: Store at -20°C. Avoid freeze / thaw cycles.

Images



Western Blotting

Image 1. Western blot analysis of extracts of various cell lines, using NOD2 Rabbit pAb (ABIN7269065) at 1:1000 dilution. Secondary antibody: HRP Goat Anti-Rabbit IgG (H+L) (ABIN1684268 and ABIN3020597) at 1:10000 dilution. Lysates/proteins: 25 µg per lane. Blocking buffer: 3 % nonfat dry milk in TBST. Detection: ECL Enhanced Kit (RM00021). Exposure time: 60s.

Immunofluorescence

Image 2. Immunofluorescence analysis of NIH/3T3 cells using NOD2 Rabbit pAb (ABIN7269065) at dilution of 1:150 (40x lens). Blue: DAPI for nuclear staining.

Immunofluorescence

Image 3. Immunofluorescence analysis of HeLa cells using NOD2 Rabbit pAb (ABIN7269065) at dilution of 1:150 (40x lens). Blue: DAPI for nuclear staining.

Images

Please check the [product details page](#) for more images. Overall 5 images are available for ABIN7269065.