

Datasheet for ABIN7269076

**anti-Obscurin antibody****3** Images[Go to Product page](#)

## Overview

Quantity:	100 µL
Target:	Obscurin (OBSCN)
Reactivity:	Human
Host:	Rabbit
Clonality:	Polyclonal
Conjugate:	This Obscurin antibody is un-conjugated
Application:	Western Blotting (WB), Immunofluorescence (IF)

## Product Details

Purpose:	OBSCN Rabbit pAb
Immunogen:	Recombinant protein of human OBSCN.
Isotype:	IgG
Cross-Reactivity:	Human, Mouse, Rat
Characteristics:	Polyclonal Antibodies
Purification:	Affinity purification

## Target Details

Target:	Obscurin (OBSCN)
Alternative Name:	OBSCN ( <a href="#">OBSCN Products</a> )
Background:	The obscurin gene spans more than 150 kb, contains over 80 exons and encodes a protein of

## Target Details

approximately 720 kDa. The encoded protein contains 68 Ig domains, 2 fibronectin domains, 1 calcium/calmodulin-binding domain, 1 RhoGEF domain with an associated PH domain, and 2 serine-threonine kinase domains. This protein belongs to the family of giant sacromeric signaling proteins that includes titin and nebulin, and may have a role in the organization of myofibrils during assembly and may mediate interactions between the sarcoplasmic reticulum and myofibrils. Alternatively spliced transcript variants encoding different isoforms have been identified. [provided by RefSeq, Jul 2008], ARHGEF30, UNC89, OBSCN, Cell Biology & Developmental Biology, Cytoskeleton, Cytoskeleton\_Motor Proteins, Signal Transduction, OBSCN

Gene ID: 84033

UniProt: [Q5VST9](#)

Pathways: [Neurotrophin Signaling Pathway](#)

## Application Details

Application Notes: WB, 1:500 - 1:2000, IF, 1:50 - 1:200

Restrictions: For Research Use only

## Handling

Format: Liquid

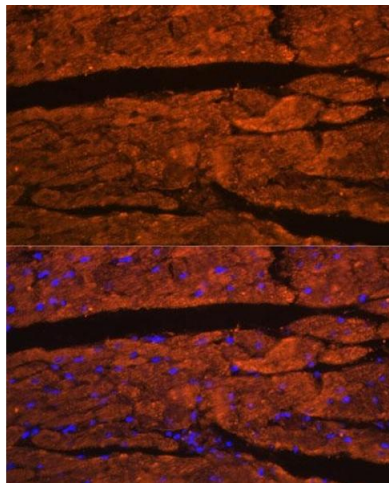
Buffer: PBS with 0.02 % sodium azide, 50 % glycerol, pH 7.3.

Preservative: Sodium azide

Precaution of Use: This product contains Sodium azide: a POISONOUS AND HAZARDOUS SUBSTANCE which should be handled by trained staff only.

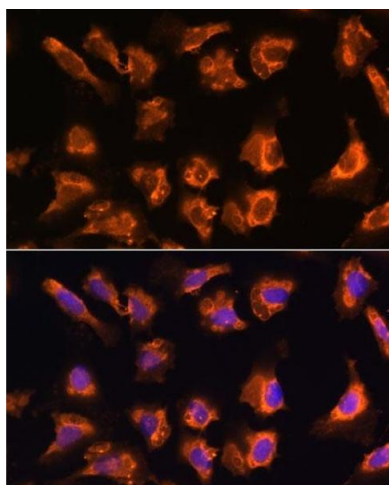
Storage: -20 °C

Storage Comment: Store at -20°C. Avoid freeze / thaw cycles.



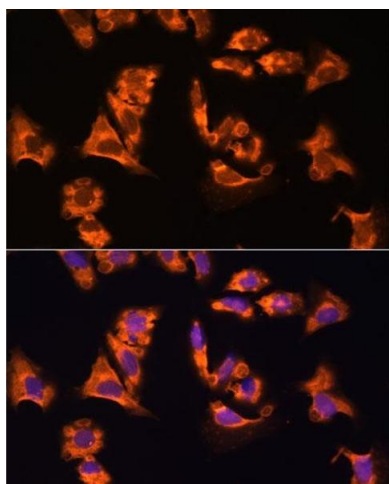
#### Immunofluorescence

**Image 1.** Immunofluorescence analysis of rat heart using OBSCN antibody (ABIN7269076) at dilution of 1:100. Blue: DAPI for nuclear staining.



#### Immunofluorescence

**Image 2.** Immunofluorescence analysis of U-2 OS cells using OBSCN antibody (ABIN7269076) at dilution of 1:100. Blue: DAPI for nuclear staining.



#### Immunofluorescence

**Image 3.** Immunofluorescence analysis of mouse heart using OBSCN antibody (ABIN7269076) at dilution of 1:100. Blue: DAPI for nuclear staining.