

Datasheet for ABIN7269080  
**anti-OSR1 antibody**

4 Images



[Go to Product page](#)

## Overview

Quantity:	100 µL
Target:	OSR1
Reactivity:	Human
Host:	Rabbit
Clonality:	Polyclonal
Conjugate:	This OSR1 antibody is un-conjugated
Application:	Western Blotting (WB), Immunohistochemistry (IHC)

## Product Details

Purpose:	OSR1 Rabbit pAb
Immunogen:	Recombinant protein of human OSR1.
Isotype:	IgG
Cross-Reactivity:	Human, Mouse, Rat
Characteristics:	Polyclonal Antibodies
Purification:	Affinity purification

## Target Details

Target:	OSR1
Alternative Name:	OSR1 ( <a href="#">OSR1 Products</a> )
Background:	Transcription factor that plays a role in the regulation of embryonic heart and urogenital

## Target Details

development.,ODD,OSR1,Epigenetics & Nuclear Signaling,Kinase,Transcription Factors,OSR1

Molecular Weight: 29kDa

Gene ID: 130497

UniProt: [Q8TAX0](#)

Pathways: [Tube Formation](#)

## Application Details

Application Notes: WB,1:500 - 1:2000,IHC,1:50 - 1:200

Restrictions: For Research Use only

## Handling

Format: Liquid

Buffer: PBS with 0.02 % sodium azide,50 % glycerol, pH 7.3.

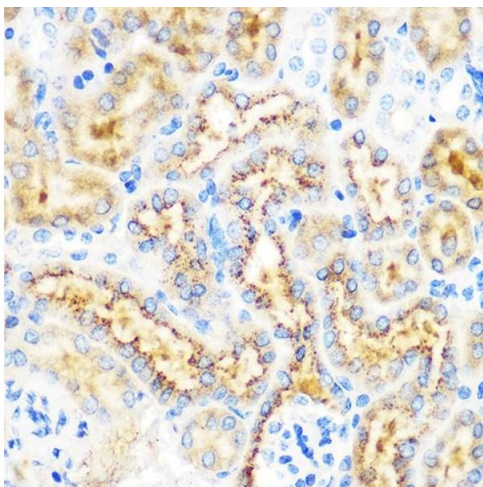
Preservative: Sodium azide

Precaution of Use: This product contains Sodium azide: a POISONOUS AND HAZARDOUS SUBSTANCE which should be handled by trained staff only.

Storage: -20 °C

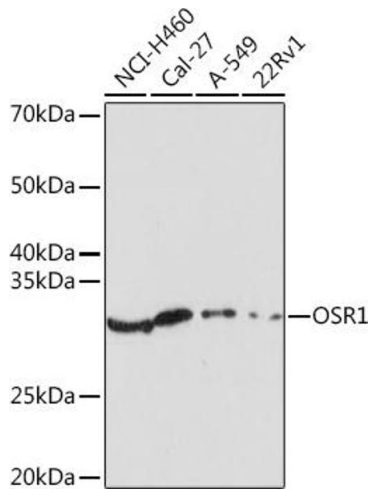
Storage Comment: Store at -20°C. Avoid freeze / thaw cycles.

## Images



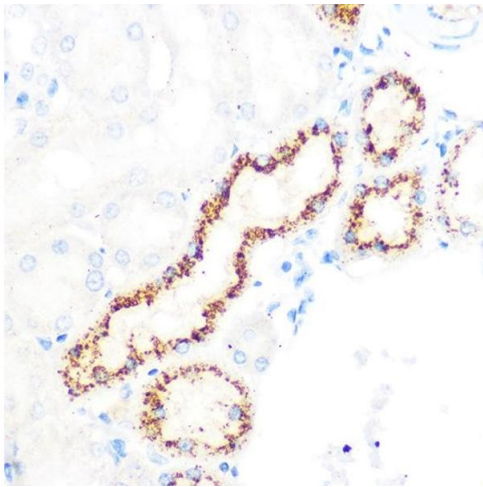
### Immunohistochemistry

**Image 1.** Immunohistochemistry of paraffin-embedded mouse kidney using OSR1 Rabbit pAb (ABIN7269080) at dilution of 1:100 (40x lens). Perform microwave antigen retrieval with 10 mM PBS buffer pH 7.2 before commencing with IHC staining protocol.



### Western Blotting

**Image 2.** Western blot analysis of extracts of various cell lines, using OSR1 Rabbit pAb (ABIN7269080) at 1:1000 dilution. Secondary antibody: HRP Goat Anti-Rabbit IgG (H+L) (ABIN1684268 and ABIN3020597) at 1:10000 dilution. Lysates/proteins: 25 µg per lane. Blocking buffer: 3 % nonfat dry milk in TBST. Detection: ECL Enhanced Kit (RM00021). Exposure time: 180s.



### Immunohistochemistry

**Image 3.** Immunohistochemistry of paraffin-embedded rat kidney using OSR1 Rabbit pAb (ABIN7269080) at dilution of 1:100 (40x lens). Perform microwave antigen retrieval with 10 mM PBS buffer pH 7.2 before commencing with IHC staining protocol.

Please check the [product details page](#) for more images. Overall 4 images are available for ABIN7269080.