



Datasheet for ABIN7269084
anti-Olfactomedin 4 antibody (AA 211-510)



[Go to Product page](#)

2 Images

Overview

Quantity:	100 µL
Target:	Olfactomedin 4 (OLFM4)
Binding Specificity:	AA 211-510
Reactivity:	Human
Host:	Rabbit
Clonality:	Polyclonal
Conjugate:	This Olfactomedin 4 antibody is un-conjugated
Application:	Western Blotting (WB), Immunofluorescence (IF)

Product Details

Purpose:	OLFM4 Rabbit pAb
Immunogen:	Recombinant fusion protein containing a sequence corresponding to amino acids 211-510 of human OLFM4 (NP_006409.3).
Sequence:	AIRREIVALK TKLKECEASK DQNTPVVHPP PTPGSCGHGG VVNISKPSVV QLNWRGFSYL YGAWGRDYSP QHPNKGLYWV APLNTDGRLL EYRLYNTLD DLLLYINARE LRITYGQGSG TAVYNNNMYV NMYNTGNIAR VNLTNTNTIAV TQTLPNAAYN NRFSYANVAW QDIDFAVDEN GLWVIYSTEA STGNMVISKL NDTTLQVLNT WYTKQYKPSA SNAFMVCGVL YATRTMNTRT EEIFYYYDTN TGKEGKLDIV MHKMQEKVQS INYNPFDQKL VVYNDGYLLN YDLSVLQKPKQ
Isotype:	IgG
Cross-Reactivity:	Human, Mouse, Rat
Characteristics:	Polyclonal Antibodies

Product Details

Purification: Affinity purification

Target Details

Target: Olfactomedin 4 (OLFM4)

Alternative Name: OLFM4 ([OLFM4 Products](#))

Background: This gene was originally cloned from human myeloblasts and found to be selectively expressed in inflamed colonic epithelium. This gene encodes a member of the olfactomedin family. The encoded protein is an antiapoptotic factor that promotes tumor growth and is an extracellular matrix glycoprotein that facilitates cell adhesion.,OLFM4,GC1,GW112,OLM4,OlfD,UNQ362,bA209J19.1,hGC-1,hOLfD,Cancer,Tumor biomarkers,OLFM4

Molecular Weight: 57kDa

Gene ID: 10562

UniProt: [Q6UX06](#)

Application Details

Application Notes: WB,1:200 - 1:2000,IF,1:50 - 1:200

Restrictions: For Research Use only

Handling

Format: Liquid

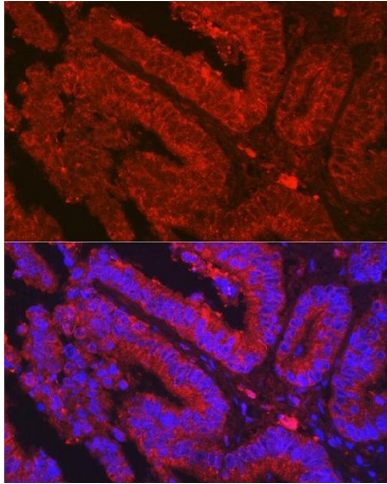
Buffer: PBS with 0.02 % sodium azide,50 % glycerol, pH 7.3.

Preservative: Sodium azide

Precaution of Use: This product contains Sodium azide: a POISONOUS AND HAZARDOUS SUBSTANCE which should be handled by trained staff only.

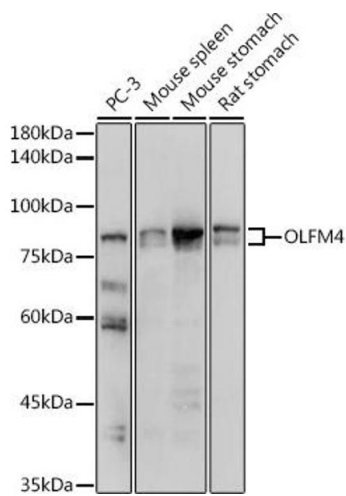
Storage: -20 °C

Storage Comment: Store at -20°C. Avoid freeze / thaw cycles.



Immunofluorescence

Image 1. Immunofluorescence analysis of human colon carcinoma using OLFM4 Rabbit pAb (ABIN7269084) at dilution of 1:500 (40x lens). Blue: DAPI for nuclear staining.



Western Blotting

Image 2. Western blot analysis of extracts of various cell lines, using OLFM4 antibody (ABIN7269084) at 1:1000 dilution. Secondary antibody: HRP Goat Anti-Rabbit IgG (H+L) (ABIN1684268 and ABIN3020597) at 1:10000 dilution. Lysates/proteins: 25 µg per lane. Blocking buffer: 3 % nonfat dry milk in TBST. Detection: ECL Basic Kit (RM00020). Exposure time: 3s.