



[Go to Product page](#)

Datasheet for ABIN7269098

anti-Oncomodulin 2 (OCM2) (AA 1-109) antibody

1 Image

Overview

Quantity:	100 µL
Target:	Oncomodulin 2 (OCM2)
Binding Specificity:	AA 1-109
Reactivity:	Human
Host:	Rabbit
Clonality:	Polyclonal
Conjugate:	Un-conjugated
Application:	Western Blotting (WB)

Product Details

Purpose:	OCM2 Rabbit pAb
Immunogen:	Recombinant fusion protein containing a sequence corresponding to amino acids 1-109 of human OCM2 (NP_006179.2).
Sequence:	MSITDVLSD DIAAALQECQ DPDTFEPQKF FQTSGLSKMS ASQVKDVFRF IDNDQSGYLD EEELKFFLQK FESGARELTE SETKSLMAAA DNDGDGKIGA EEFQEMVHS
Isotype:	IgG
Cross-Reactivity:	Rat
Characteristics:	Polyclonal Antibodies
Purification:	Affinity purification

Target Details

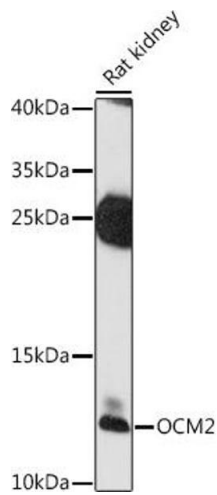
Target:	Oncomodulin 2 (OCM2)
Alternative Name:	OCM2 (OCM2 Products)
Background:	This gene is similar to the oncomodulin gene, a high-affinity calcium ion-binding protein that belongs to the superfamily of calmodulin proteins, also known as the EF-hand proteins.,OCM2,OCM,OCM2
Molecular Weight:	12kDa
Gene ID:	4951
UniProt:	P0CE71

Application Details

Application Notes:	WB,1:500 - 1:2000
Restrictions:	For Research Use only

Handling

Format:	Liquid
Buffer:	PBS with 0.02 % sodium azide,50 % glycerol, pH 7.3.
Preservative:	Sodium azide
Precaution of Use:	This product contains Sodium azide: a POISONOUS AND HAZARDOUS SUBSTANCE which should be handled by trained staff only.
Storage:	-20 °C
Storage Comment:	Store at -20°C. Avoid freeze / thaw cycles.



Western Blotting

Image 1. Western blot analysis of extracts of rat kidney, using OCM2 antibody (ABIN7269098) at 1:1000 dilution. Secondary antibody: HRP Goat Anti-Rabbit IgG (H+L) (ABIN1684268 and ABIN3020597) at 1:10000 dilution. Lysates/proteins: 25 µg per lane. Blocking buffer: 3 % nonfat dry milk in TBST. Detection: ECL Enhanced Kit (RM00021). Exposure time: 90s.