



Datasheet for ABIN7269100
anti-OPRD1 antibody



[Go to Product page](#)

1 Image

Overview

Quantity:	100 µL
Target:	OPRD1
Reactivity:	Human
Host:	Rabbit
Clonality:	Monoclonal
Conjugate:	This OPRD1 antibody is un-conjugated
Application:	Western Blotting (WB)

Product Details

Purpose:	OPRD1 Rabbit mAb
Immunogen:	A synthesized peptide derived from human OPRD1
Isotype:	IgG
Cross-Reactivity:	Human, Mouse, Rat
Characteristics:	Monoclonal Antibodies
Purification:	Affinity purification

Target Details

Target:	OPRD1
Alternative Name:	OPRD1 (OPRD1 Products)
Background:	G-protein coupled receptor that functions as receptor for endogenous enkephalins and for a

Target Details

subset of other opioids. Ligand binding causes a conformation change that triggers signaling via guanine nucleotide-binding proteins (G proteins and modulates the activity of down-stream effectors, such as adenylate cyclase. Signaling leads to the inhibition of adenylate cyclase activity. Inhibits neurotransmitter release by reducing calcium ion currents and increasing potassium ion conductance. Plays a role in the perception of pain and in opiate-mediated analgesia. Plays a role in developing analgesic tolerance to morphine.,OPRD,G protein signaling,G protein signaling_G-Protein-Coupled Receptors(GPCR),Neuroscience,Signal Transduction,OPRD1

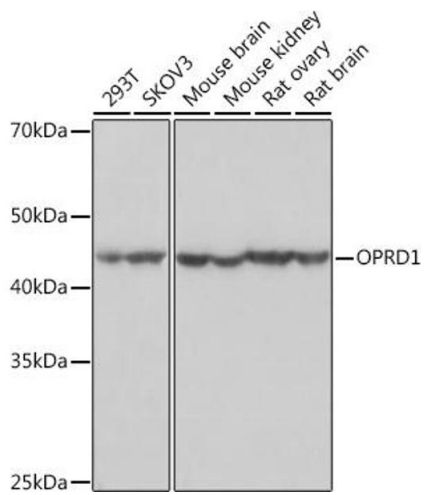
Molecular Weight:	40kDa
Gene ID:	4985
UniProt:	P41143
Pathways:	Protein targeting to Nucleus

Application Details

Application Notes:	WB,1:500 - 1:2000
Restrictions:	For Research Use only

Handling

Format:	Liquid
Buffer:	PBS with 0.02 % sodium azide,0.05 % BSA,50 % glycerol, pH 7.3.
Preservative:	Sodium azide
Precaution of Use:	This product contains Sodium azide: a POISONOUS AND HAZARDOUS SUBSTANCE which should be handled by trained staff only.
Storage:	-20 °C
Storage Comment:	Store at -20°C. Avoid freeze / thaw cycles.



Western Blotting

Image 1. Western blot analysis of extracts of various cell lines, using OPRD1 Rabbit mAb (ABIN7269100) at 1:1000 dilution. Secondary antibody: HRP Goat Anti-Rabbit IgG (H+L) (ABIN1684268 and ABIN3020597) at 1:10000 dilution. Lysates/proteins: 25 µg per lane. Blocking buffer: 3 % nonfat dry milk in TBST. Detection: ECL Basic Kit (RM00020). Exposure time: 3s.