

Datasheet for ABIN7269127
anti-ODF1 antibody (AA 80-180)



[Go to Product page](#)

1 Image

Overview

Quantity:	100 µL
Target:	ODF1
Binding Specificity:	AA 80-180
Reactivity:	Human
Host:	Rabbit
Clonality:	Polyclonal
Conjugate:	This ODF1 antibody is un-conjugated
Application:	Western Blotting (WB)

Product Details

Purpose:	ODF1 Rabbit pAb
Immunogen:	Recombinant fusion protein containing a sequence corresponding to amino acids 80-180 of human ODF1 (NP_077721.2).
Sequence:	LYCLRPSLRS LERKAIRAIE DEKRELAKLR RTTNRILASS CCSSNILGSV NVCGFEPDQV KVRVKDGGKVC VSAERENRYD CLGSKKYSYM NICKEFSLPP C
Isotype:	IgG
Cross-Reactivity:	Human, Mouse, Rat
Characteristics:	Polyclonal Antibodies
Purification:	Affinity purification

Target Details

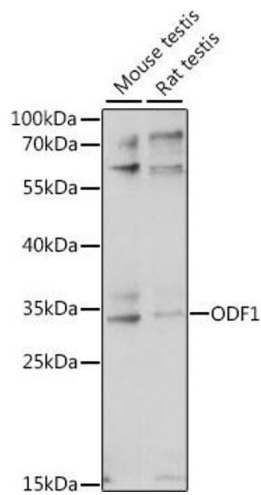
Target:	ODF1
Alternative Name:	ODF1 (ODF1 Products)
Background:	<p>The outer dense fibers are cytoskeletal structures that surround the axoneme in the middle piece and principal piece of the sperm tail. The fibers function in maintaining the elastic structure and recoil of the sperm tail as well as in protecting the tail from shear forces during epididymal transport and ejaculation. Defects in the outer dense fibers lead to abnormal sperm morphology and infertility. The human outer dense fibers contains at least 10 major proteins and this gene encodes the main protein.,ODF1,CT133,HSPB10,ODF,ODF2,ODF27,ODFP,ODFPG,ODFPGA,ODFPGB,RT7,SODF,ODF1</p>
Molecular Weight:	28kDa
Gene ID:	4956
UniProt:	Q14990

Application Details

Application Notes:	WB,1:500 - 1:2000
Restrictions:	For Research Use only

Handling

Format:	Liquid
Buffer:	PBS with 0.02 % sodium azide,50 % glycerol, pH 7.3.
Preservative:	Sodium azide
Precaution of Use:	This product contains Sodium azide: a POISONOUS AND HAZARDOUS SUBSTANCE which should be handled by trained staff only.
Storage:	-20 °C
Storage Comment:	Store at -20°C. Avoid freeze / thaw cycles.



Western Blotting

Image 1. Western blot analysis of extracts of various cell lines, using ODF1 antibody (ABIN7269127) at 1:1000 dilution. Secondary antibody: HRP Goat Anti-Rabbit IgG (H+L) (ABIN1684268 and ABIN3020597) at 1:10000 dilution. Lysates/proteins: 25 µg per lane. Blocking buffer: 3 % nonfat dry milk in TBST. Detection: ECL Basic Kit (RM00020). Exposure time: 30s.