



[Go to Product page](#)

Datasheet for ABIN7269135  
**anti-OGDHL antibody (AA 1-110)**

3 Images

Overview

Quantity:	100 µL
Target:	OGDHL
Binding Specificity:	AA 1-110
Reactivity:	Human
Host:	Rabbit
Clonality:	Polyclonal
Conjugate:	This OGDHL antibody is un-conjugated
Application:	Western Blotting (WB), Immunohistochemistry (IHC)

Product Details

Purpose:	OGDHL Rabbit pAb
Immunogen:	Recombinant fusion protein containing a sequence corresponding to amino acids 1-110 of human OGDHL (NP_060715.2).
Sequence:	MSQLRLLPSR LGVQAARLLA AHDVPVFGWR SRSSGPPATF PSSKGGGGSS YMEEMYFAWL ENPQSVHKSW DSFFREASEE AFSGSAQPRP PSVVHESRSA VSSRTKTSKL
Isotype:	IgG
Cross-Reactivity:	Human, Mouse, Rat
Characteristics:	Polyclonal Antibodies
Purification:	Affinity purification

## Target Details

---

Target:	OGDHL
Alternative Name:	OGDHL ( <a href="#">OGDHL Products</a> )
Background:	The protein encoded by this gene is similar to oxoglutarate dehydrogenase (OGDH) of the OGDH complex, which degrades glucose and glutamate. This gene encodes several isoforms, including some that appear to localize to mitochondria. The encoded protein down-regulates the AKT signaling cascade and can suppress the growth of cervical cancer cells.,OGDHL,Cancer,Signal Transduction,Endocrine & Metabolism,Mitochondrial metabolism,Mitochondrial markers,OGDHL
Molecular Weight:	91kDa/108kDa/114kDa
Gene ID:	55753
UniProt:	<a href="#">Q9ULD0</a>

## Application Details

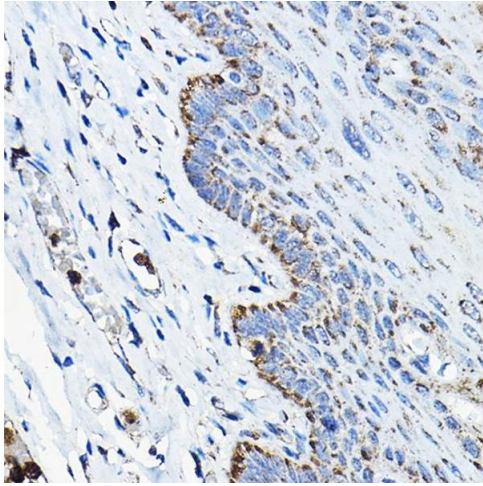
---

Application Notes:	WB,1:200 - 1:2000,IHC,1:50 - 1:200
Restrictions:	For Research Use only

## Handling

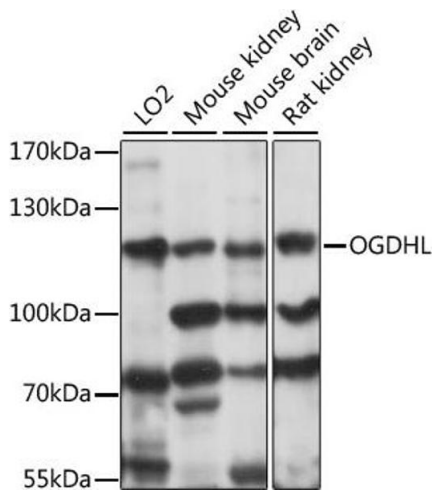
---

Format:	Liquid
Buffer:	PBS with 0.02 % sodium azide,50 % glycerol, pH 7.3.
Preservative:	Sodium azide
Precaution of Use:	This product contains Sodium azide: a POISONOUS AND HAZARDOUS SUBSTANCE which should be handled by trained staff only.
Storage:	-20 °C
Storage Comment:	Store at -20°C. Avoid freeze / thaw cycles.



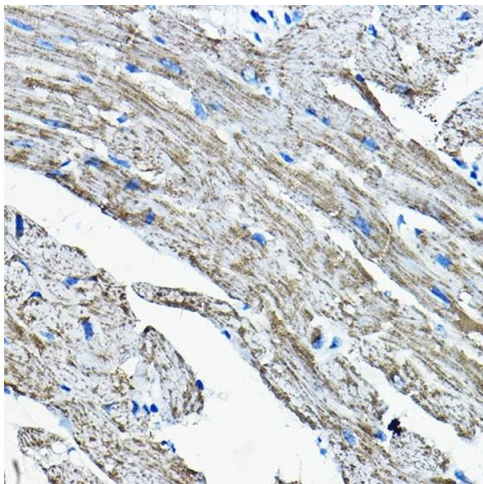
### Immunohistochemistry

**Image 1.** Immunohistochemistry of paraffin-embedded human esophageal using OGDHL Rabbit pAb (ABIN7269135) at dilution of 1:200 (40x lens). Perform high pressure antigen retrieval with 10 mM citrate buffer pH 6.0 before commencing with IHC staining protocol.



### Western Blotting

**Image 2.** Western blot analysis of extracts of various cell lines, using OGDHL antibody (ABIN7269135) at 1:1000 dilution. Secondary antibody: HRP Goat Anti-Rabbit IgG (H+L) (ABIN1684268 and ABIN3020597) at 1:10000 dilution. Lysates/proteins: 25 µg per lane. Blocking buffer: 3 % nonfat dry milk in TBST. Detection: ECL Basic Kit (RM00020). Exposure time: 5s.



### Immunohistochemistry

**Image 3.** Immunohistochemistry of paraffin-embedded mouse heart using OGDHL Rabbit pAb (ABIN7269135) at dilution of 1:200 (40x lens). Perform high pressure antigen retrieval with 10 mM citrate buffer pH 6.0 before commencing with IHC staining protocol.