

Datasheet for ABIN7269146

anti-PAK2 antibody

4 Images

[Go to Product page](#)

Overview

Quantity:	100 µL
Target:	PAK2
Reactivity:	Human
Host:	Rabbit
Clonality:	Monoclonal
Conjugate:	This PAK2 antibody is un-conjugated
Application:	Western Blotting (WB), Immunofluorescence (IF)

Product Details

Purpose:	PAK2 Rabbit mAb
Immunogen:	A synthesized peptide derived from human PAK2
Isotype:	IgG
Cross-Reactivity:	Human, Mouse, Rat
Characteristics:	Monoclonal Antibodies
Purification:	Affinity purification

Target Details

Target:	PAK2
Alternative Name:	PAK2 (PAK2 Products)
Background:	The p21 activated kinases (PAK) are critical effectors that link Rho GTPases to cytoskeleton

Target Details

reorganization and nuclear signaling. The PAK proteins are a family of serine/threonine kinases that serve as targets for the small GTP binding proteins, CDC42 and RAC1, and have been implicated in a wide range of biological activities. The protein encoded by this gene is activated by proteolytic cleavage during caspase-mediated apoptosis, and may play a role in regulating the apoptotic events in the dying cell. [provided by RefSeq, Jul 2008],PAK65, PAKgamma,Apoptosis,Cancer,Cell Biology & Developmental Biology,Cytoskeleton_Microtubules,Immunology & Inflammation,Kinase,Kinase_Serine/threonine kinases,MAPK-Erk Signaling Pathway,Protein phosphorylation,Signal Transduction,TGF-b-Smad Signaling Pathway,PAK2

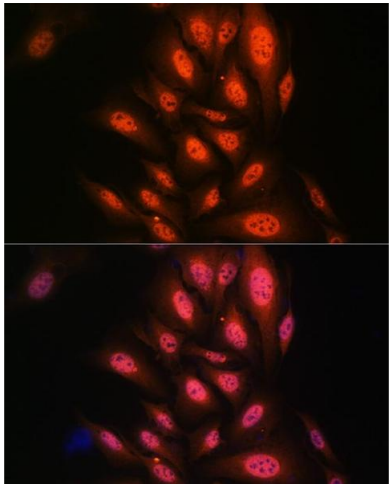
Molecular Weight:	61kDa
Gene ID:	5062
UniProt:	Q13177
Pathways:	MAPK Signaling , RTK Signaling , TCR Signaling , Fc-epsilon Receptor Signaling Pathway , Regulation of Lipid Metabolism by PPARalpha

Application Details

Application Notes:	WB,1:500 - 1:2000,IF,1:50 - 1:200
Restrictions:	For Research Use only

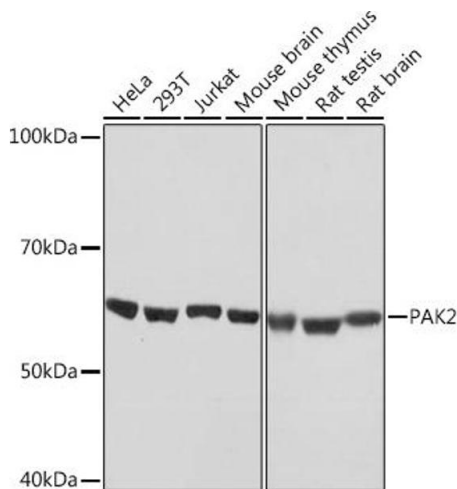
Handling

Format:	Liquid
Buffer:	PBS with 0.02 % sodium azide,0.05 % BSA,50 % glycerol, pH 7.3.
Preservative:	Sodium azide
Precaution of Use:	This product contains Sodium azide: a POISONOUS AND HAZARDOUS SUBSTANCE which should be handled by trained staff only.
Storage:	-20 °C
Storage Comment:	Store at -20°C. Avoid freeze / thaw cycles.



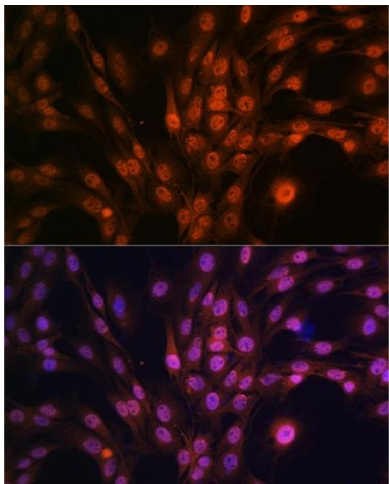
Immunofluorescence

Image 1. Immunofluorescence analysis of U2OS cells using P antibody (ABIN7269146) at dilution of 1:100. Blue: DAPI for nuclear staining.



Western Blotting

Image 2. Western blot analysis of extracts of various cell lines, using P Rabbit mAb (ABIN7269146) at 1:1000 dilution. Secondary antibody: HRP Goat Anti-Rabbit IgG (H+L) (ABIN1684268 and ABIN3020597) at 1:10000 dilution. Lysates/proteins: 25 µg per lane. Blocking buffer: 3 % nonfat dry milk in TBST. Detection: ECL Basic Kit (RM00020). Exposure time: 10s.



Immunofluorescence

Image 3. Immunofluorescence analysis of C6 cells using P antibody (ABIN7269146) at dilution of 1:100. Blue: DAPI for nuclear staining.

Please check the [product details page](#) for more images. Overall 4 images are available for ABIN7269146.