

Datasheet for ABIN7269158

anti-PRRX2 antibody[Go to Product page](#)**1** Image

Overview

Quantity:	100 µL
Target:	PRRX2
Reactivity:	Human
Host:	Rabbit
Clonality:	Polyclonal
Conjugate:	This PRRX2 antibody is un-conjugated
Application:	Western Blotting (WB)

Product Details

Purpose:	PRRX2 Rabbit pAb
Immunogen:	Recombinant protein of human PRRX2.
Isotype:	IgG
Cross-Reactivity:	Human, Mouse, Rat
Characteristics:	Polyclonal Antibodies
Purification:	Affinity purification

Target Details

Target:	PRRX2
Alternative Name:	PRRX2 (PRRX2 Products)
Background:	The DNA-associated protein encoded by this gene is a member of the paired family of

Target Details

homeobox proteins. Expression is localized to proliferating fetal fibroblasts and the developing dermal layer, with downregulated expression in adult skin. Increases in expression of this gene during fetal but not adult wound healing suggest a possible role in mechanisms that control mammalian dermal regeneration and prevent formation of scar response to wounding. The expression patterns provide evidence consistent with a role in fetal skin development and a possible role in cellular proliferation.,PMX2, PRX2,PRRX2

Molecular Weight: 27kDa

Gene ID: 51450

UniProt: [Q99811](#)

Application Details

Application Notes: WB,1:500 - 1:2000

Restrictions: For Research Use only

Handling

Format: Liquid

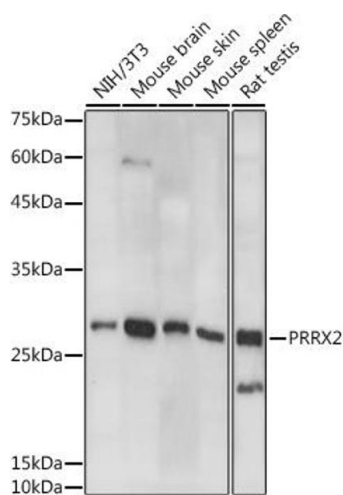
Buffer: PBS with 0.02 % sodium azide,50 % glycerol, pH 7.3.

Preservative: Sodium azide

Precaution of Use: This product contains Sodium azide: a POISONOUS AND HAZARDOUS SUBSTANCE which should be handled by trained staff only.

Storage: -20 °C

Storage Comment: Store at -20°C. Avoid freeze / thaw cycles.



Western Blotting

Image 1. Western blot analysis of extracts of various cell lines, using PRRX2 antibody (ABIN7269158) at 1:1000 dilution. Secondary antibody: HRP Goat Anti-Rabbit IgG (H+L) (ABIN1684268 and ABIN3020597) at 1:10000 dilution. Lysates/proteins: 25 µg per lane. Blocking buffer: 3 % nonfat dry milk in TBST. Detection: ECL Basic Kit (RM00020). Exposure time: 10s.