

Datasheet for ABIN7269175

**anti-PTH antibody**

## 4 Images

[Go to Product page](#)

## Overview

Quantity:	100 µL
Target:	PTH
Reactivity:	Human
Host:	Rabbit
Clonality:	Monoclonal
Conjugate:	This PTH antibody is un-conjugated
Application:	Western Blotting (WB), Immunofluorescence (IF)

## Product Details

Purpose:	Parathyroid Hormone (PTH) Rabbit mAb
Immunogen:	A synthesized peptide derived from human Parathyroid Hormone (PTH) (PTH)
Isotype:	IgG
Cross-Reactivity:	Human, Mouse, Rat
Characteristics:	Monoclonal Antibodies
Purification:	Affinity purification

## Target Details

Target:	PTH
Alternative Name:	PTH ( <a href="#">PTH Products</a> )
Target Type:	Hormone

## Target Details

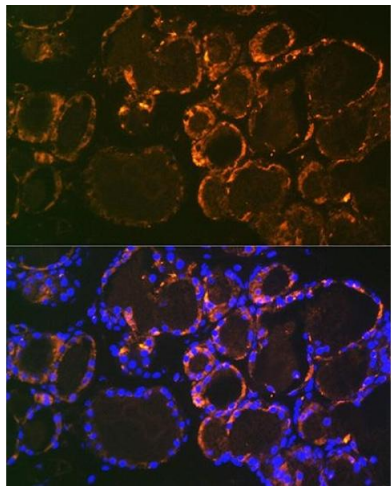
Background:	This gene encodes a member of the parathyroid family of proteins. The encoded preproprotein is proteolytically processed to generate a protein that binds to the parathyroid hormone/parathyroid hormone-related peptide receptor and regulates blood calcium and phosphate levels. Excess production of the encoded protein, known as hyperparathyroidism, can result in hypercalcemia and kidney stones. On the other hand, defective processing of the encoded protein may lead to hypoparathyroidism, which can result in hypocalcemia and numbness. Alternative splicing results in multiple transcript variants. [provided by RefSeq, Oct 2015],PTH1,Apoptosis,Cell Biology & Developmental Biology,Growth factors,Signal Transduction,PTH
Molecular Weight:	36kDa
Gene ID:	5741
UniProt:	<a href="#">P01270</a>
Pathways:	<a href="#">cAMP Metabolic Process</a> , <a href="#">Regulation of Carbohydrate Metabolic Process</a>

## Application Details

Application Notes:	WB,1:500 - 1:2000,IF,1:50 - 1:200
Restrictions:	For Research Use only

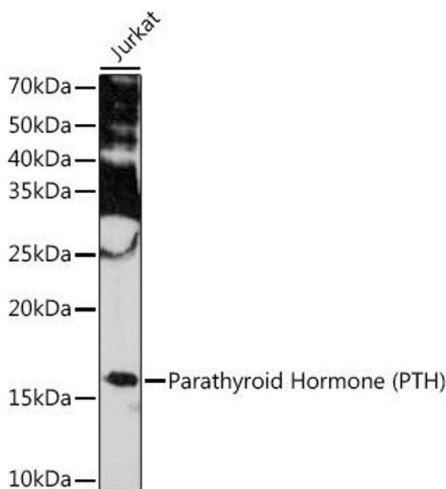
## Handling

Format:	Liquid
Buffer:	PBS with 0.02 % sodium azide,0.05 % BSA,50 % glycerol, pH 7.3.
Preservative:	Sodium azide
Precaution of Use:	This product contains Sodium azide: a POISONOUS AND HAZARDOUS SUBSTANCE which should be handled by trained staff only.
Storage:	-20 °C
Storage Comment:	Store at -20°C. Avoid freeze / thaw cycles.



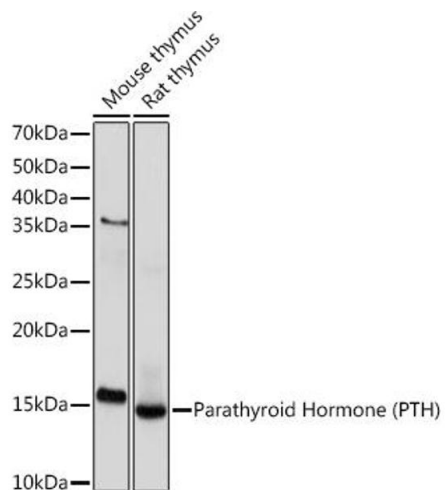
### Immunofluorescence

**Image 1.** Immunofluorescence analysis of mouse thyroid using Parathyroid Hormone (PTH) (PTH) Rabbit mAb (ABIN7269175) at dilution of 1:100 (40x lens). Blue: DAPI for nuclear staining.



### Western Blotting

**Image 2.** Western blot analysis of extracts of Jurkat cells, using Parathyroid Hormone (PTH) (PTH) Rabbit mAb (ABIN7269175) at 1:1000 dilution. Secondary antibody: HRP Goat Anti-Rabbit IgG (H+L) (ABIN1684268 and ABIN3020597) at 1:10000 dilution. Lysates/proteins: 25 µg per lane. Blocking buffer: 3 % nonfat dry milk in TBST. Detection: ECL Basic Kit (RM00020). Exposure time: 90s.



### Western Blotting

**Image 3.** Western blot analysis of extracts of various cell lines, using Parathyroid Hormone (PTH) (PTH) Rabbit mAb (ABIN7269175) at 1:1000 dilution. Secondary antibody: HRP Goat Anti-Rabbit IgG (H+L) (ABIN1684268 and ABIN3020597) at 1:10000 dilution. Lysates/proteins: 25 µg per lane. Blocking buffer: 3 % nonfat dry milk in TBST. Detection: ECL Basic Kit (RM00020). Exposure time: 10s.

Please check the [product details page](#) for more images. Overall 4 images are available for ABIN7269175.