

Datasheet for ABIN7269176  
**anti-PACRG antibody (AA 150-250)**[Go to Product page](#)

## 1 Image

## Overview

Quantity:	100 µL
Target:	PACRG
Binding Specificity:	AA 150-250
Reactivity:	Human
Host:	Rabbit
Clonality:	Polyclonal
Conjugate:	This PACRG antibody is un-conjugated
Application:	Western Blotting (WB)

## Product Details

Purpose:	PACRG Rabbit pAb
Immunogen:	A synthetic peptide corresponding to a sequence within amino acids 150-250 of human PACRG (NP_001073847.1).
Sequence:	IIPKINALNL RNRQVICVTL KVLQHLVVSA EMVGKALVPY YRQILPVLNI FKNMNVNSGD GIDYSQQKRE NIGDLIQETL EAFERYGGEN AFINIKYVVP T
Isotype:	IgG
Cross-Reactivity:	Human, Mouse, Rat
Characteristics:	Polyclonal Antibodies
Purification:	Affinity purification

## Target Details

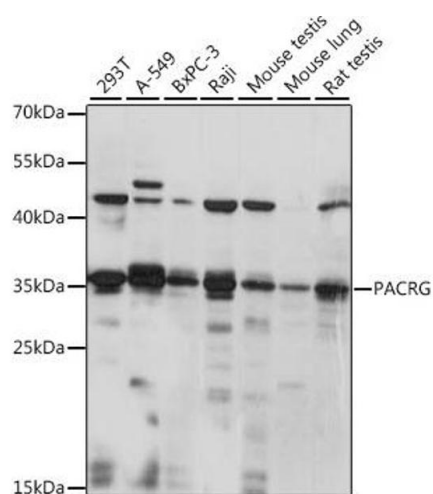
Target:	PACRG
Alternative Name:	PACRG ( <a href="#">PACRG Products</a> )
Background:	<p>This gene encodes a protein that is conserved across metazoans. In vertebrates, this gene is linked in a head-to-head arrangement with the adjacent parkin gene, which is associated with autosomal recessive juvenile Parkinson's disease. These genes are co-regulated in various tissues and they share a bi-directional promoter. Both genes are associated with susceptibility to leprosy. The parkin co-regulated gene protein forms a large molecular complex with chaperones, including heat shock proteins 70 and 90, and chaperonin components. This protein is also a component of Lewy bodies in Parkinson's disease patients, and it suppresses unfolded Pael receptor-induced neuronal cell death. Multiple transcript variants encoding different isoforms have been found for this gene.,PACRG,GLUP,HAK005771,PARK2CRG,Cell Biology &amp; Developmental Biology,Ubiquitin,Neuroscience,Neurodegenerative Diseases,Dopamine Signaling in Parkinson's Disease,PACRG</p>
Molecular Weight:	29kDa/33kDa
Gene ID:	135138
UniProt:	<a href="#">Q96M98</a>

## Application Details

Application Notes:	WB,1:500 - 1:2000
Restrictions:	For Research Use only

## Handling

Format:	Liquid
Buffer:	PBS with 0.02 % sodium azide,50 % glycerol, pH 7.3.
Preservative:	Sodium azide
Precaution of Use:	This product contains Sodium azide: a POISONOUS AND HAZARDOUS SUBSTANCE which should be handled by trained staff only.
Storage:	-20 °C
Storage Comment:	Store at -20°C. Avoid freeze / thaw cycles.



Western Blotting

**Image 1.** Western blot analysis of extracts of various cell lines, using PACRG antibody (ABIN7269176) at 1:1000 dilution. Secondary antibody: HRP Goat Anti-Rabbit IgG (H+L) (ABIN1684268 and ABIN3020597) at 1:10000 dilution. Lysates/proteins: 25 µg per lane. Blocking buffer: 3 % nonfat dry milk in TBST. Detection: ECL Basic Kit (RM00020). Exposure time: 10s.