

Datasheet for ABIN7269184
anti-Patched 1 antibody (AA 770-970)

3 Images

[Go to Product page](#)

Overview

| | |
|----------------------|--|
| Quantity: | 100 µL |
| Target: | Patched 1 (PTCH1) |
| Binding Specificity: | AA 770-970 |
| Reactivity: | Human |
| Host: | Rabbit |
| Clonality: | Polyclonal |
| Conjugate: | This Patched 1 antibody is un-conjugated |
| Application: | Western Blotting (WB), Immunofluorescence (IF) |

Product Details

| | |
|-------------------|--|
| Purpose: | PTCH1 Rabbit pAb |
| Immunogen: | Recombinant fusion protein containing a sequence corresponding to amino acids 770-970 of human PTCH1 (NP_000255.2). |
| Sequence: | RVRDGLDLTD IVPRETREYD FIAAQFKYFS FYNMYIVTQK ADYPNIQHLL YDLHRSFSNV KYVMLEENKQ LPKMWLHYFR DWLQGLQDAF DSDWETGKIM PNNYKNGSDD GVLAYKLLVQ TGSRDKPIDI SQLTKQRLVD ADGIINPSAF YIYLTAWVSN DPVAYAASQA NIRPHRPEWV HDKADYMPET RLRIPAAEPI E |
| Isotype: | IgG |
| Cross-Reactivity: | Human, Mouse, Rat |
| Characteristics: | Polyclonal Antibodies |

Product Details

Purification: Affinity purification

Target Details

Target: Patched 1 (PTCH1)

Alternative Name: PTCH1 ([PTCH1 Products](#))

Background: This gene encodes a member of the patched gene family. The encoded protein is the receptor for sonic hedgehog, a secreted molecule implicated in the formation of embryonic structures and in tumorigenesis, as well as the desert hedgehog and indian hedgehog proteins. This gene functions as a tumor suppressor. Mutations of this gene have been associated with basal cell nevus syndrome, esophageal squamous cell carcinoma, trichoepitheliomas, transitional cell carcinomas of the bladder, as well as holoprosencephaly. Alternative splicing results in multiple transcript variants encoding different isoforms. Additional splice variants have been described, but their full length sequences and biological validity cannot be determined currently.,PTCH1,BCNS,HPE7,NBCCS,PTC,PTC1,PTCH,PTCH11,patched 1,Cancer,Tumor suppressors,Signal Transduction,G protein signaling,Cell Biology & Developmental Biology,Cell Cycle,Cell cycle inhibitors,Hedgehog Signaling Pathway,Neuroscience,Stem Cells,PTCH1

Molecular Weight: 144kDa/153kDa/160kDa/161kDa

Gene ID: 5727

UniProt: [Q13635](#)

Pathways: [Hedgehog Signaling](#), [Carbohydrate Homeostasis](#), [Tube Formation](#)

Application Details

Application Notes: WB,1:500 - 1:2000,IF,1:50 - 1:200

Restrictions: For Research Use only

Handling

Format: Liquid

Buffer: PBS with 0.02 % sodium azide,50 % glycerol, pH 7.3.

Preservative: Sodium azide

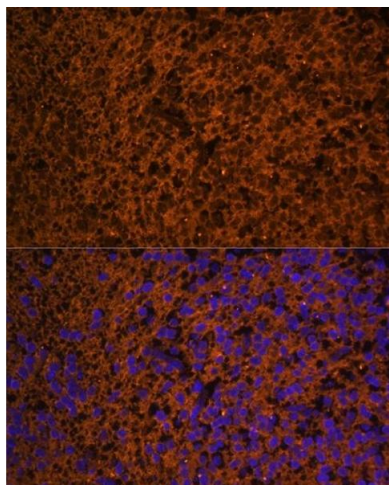
Precaution of Use: This product contains Sodium azide: a POISONOUS AND HAZARDOUS SUBSTANCE which should be handled by trained staff only.

Handling

Storage: -20 °C

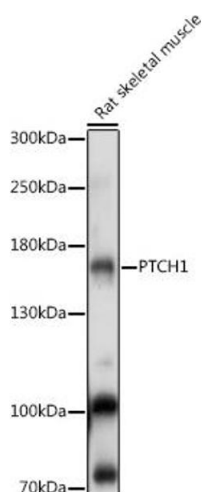
Storage Comment: Store at -20°C. Avoid freeze / thaw cycles.

Images



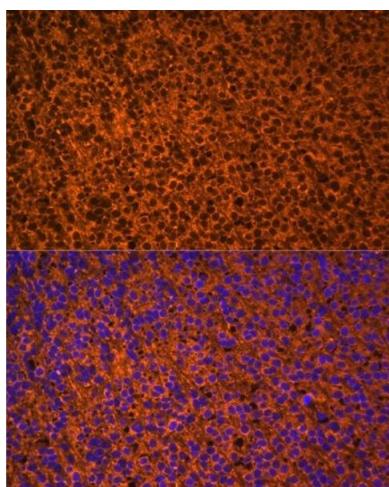
Immunofluorescence

Image 1. Immunofluorescence analysis of mouse embryos cells using PTCH1 antibody (ABIN7269184) at dilution of 1:100. Blue: DAPI for nuclear staining.



Western Blotting

Image 2. Western blot analysis of extracts of Rat skeletal muscle, using PTCH1 antibody (ABIN7269184) at 1:1000 dilution. Secondary antibody: HRP Goat Anti-Rabbit IgG (H+L) (ABIN1684268 and ABIN3020597) at 1:10000 dilution. Lysates/proteins: 25 µg per lane. Blocking buffer: 3 % nonfat dry milk in TBST. Detection: ECL Basic Kit (RM00020). Exposure time: 10s.



Immunofluorescence

Image 3. Immunofluorescence analysis of mouse embryos cells using PTCH1 antibody (ABIN7269184) at dilution of 1:100. Blue: DAPI for nuclear staining.