



[Go to Product page](#)

Datasheet for ABIN7269205
anti-PI15 antibody (AA 61-170)

1 Image

Overview

Quantity:	100 µL
Target:	PI15
Binding Specificity:	AA 61-170
Reactivity:	Human
Host:	Rabbit
Clonality:	Polyclonal
Conjugate:	This PI15 antibody is un-conjugated
Application:	Western Blotting (WB)

Product Details

Purpose:	PI15 Rabbit pAb
Immunogen:	Recombinant fusion protein containing a sequence corresponding to amino acids 61-170 of human PI15 (NP_056970.1).
Sequence:	YISQNDMIAI LDYHNQVRGK VFPPAANMEY MVWDENLAKS AEAWAATCIW DHGPSYLLRF LGQNLSVRTG RYRSILQLVK PWYDEVKDYA FPYPQDCNPR CPMRCFGPMC
Isotype:	IgG
Cross-Reactivity:	Mouse, Rat
Characteristics:	Polyclonal Antibodies
Purification:	Affinity purification

Target Details

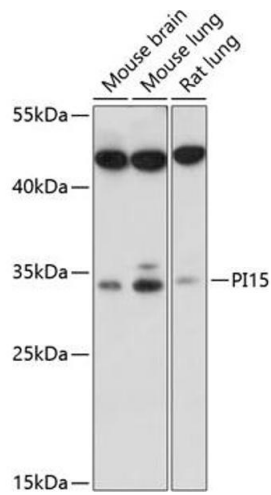
Target:	PI15
Alternative Name:	PI15 (PI15 Products)
Background:	This gene encodes a trypsin inhibitor. The protein shares similarity to insect venom allergens, mammalian testis-specific proteins and plant pathogenesis-related proteins. It is frequently expressed in human neuroblastoma and glioblastoma cell lines, and thus may play a role in the central nervous system.,PI15,CRISP8,P24TI,P25TI,Cell Biology & Developmental Biology,Cell Adhesion,Ubiquitin,Neuroscience,PI15
Molecular Weight:	29kDa
Gene ID:	51050
UniProt:	O43692

Application Details

Application Notes:	WB,1:500 - 1:2000
Restrictions:	For Research Use only

Handling

Format:	Liquid
Buffer:	PBS with 0.02 % sodium azide,50 % glycerol, pH 7.3.
Preservative:	Sodium azide
Precaution of Use:	This product contains Sodium azide: a POISONOUS AND HAZARDOUS SUBSTANCE which should be handled by trained staff only.
Storage:	-20 °C
Storage Comment:	Store at -20°C. Avoid freeze / thaw cycles.



Western Blotting

Image 1. Western blot analysis of extracts of various cell lines, using PI15 antibody (ABIN7269205) at 1:1000 dilution. Secondary antibody: HRP Goat Anti-Rabbit IgG (H+L) (ABIN1684268 and ABIN3020597) at 1:10000 dilution. Lysates/proteins: 25 µg per lane. Blocking buffer: 3 % nonfat dry milk in TBST. Detection: ECL Basic Kit (RM00020). Exposure time: 90s.