



Datasheet for ABIN7269208

anti-PIN4 antibody



[Go to Product page](#)

1 Image

Overview

Quantity:	100 µL
Target:	PIN4
Reactivity:	Human
Host:	Rabbit
Clonality:	Monoclonal
Conjugate:	This PIN4 antibody is un-conjugated
Application:	Western Blotting (WB)

Product Details

Purpose:	PIN4 Rabbit mAb
Immunogen:	Recombinant protein of Human PIN4.
Isotype:	IgG
Cross-Reactivity:	Human, Mouse, Rat
Characteristics:	Monoclonal Antibodies
Purification:	Affinity purification

Target Details

Target:	PIN4
Alternative Name:	PIN4 (PIN4 Products)
Background:	This gene encodes a member of the parvulin subfamily of the peptidyl-prolyl cis/trans

Target Details

isomerase protein family. The encoded protein catalyzes the isomerization of peptidylprolyl bonds, and may play a role in the cell cycle, chromatin remodeling, and/or ribosome biogenesis. The encoded protein may play an additional role in the mitochondria. [provided by RefSeq, Dec 2009],EPVH,PAR14,PAR17,PIN4,Endocrine & Metabolism,Epigenetics & Nuclear Signaling,Mitochondrial metabolism,Mitochondrial metabolism_Mitochondrial markers,Mitochondrial metabolism_Mitochondrial translation,Nucleotide metabolism,Signal Transduction,PIN4

Molecular Weight: 14kDa

Gene ID: 5303

UniProt: [Q9Y237](#)

Application Details

Application Notes: WB,1:500 - 1:2000

Restrictions: For Research Use only

Handling

Format: Liquid

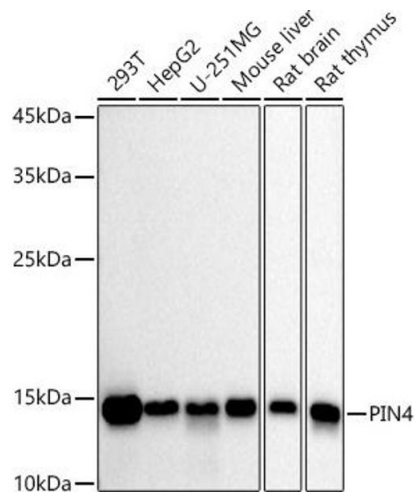
Buffer: PBS with 0.02 % sodium azide,0.05 % BSA,50 % glycerol, pH 7.3.

Preservative: Sodium azide

Precaution of Use: This product contains Sodium azide: a POISONOUS AND HAZARDOUS SUBSTANCE which should be handled by trained staff only.

Storage: -20 °C

Storage Comment: Store at -20°C. Avoid freeze / thaw cycles.



Western Blotting

Image 1. Western blot analysis of extracts of various cell lines, using PIN4 antibody (ABIN7269208) at 1:1000 dilution. Secondary antibody: HRP Goat Anti-Rabbit IgG (H+L) (ABIN1684268 and ABIN3020597) at 1:10000 dilution. Lysates/proteins: 25 µg per lane. Blocking buffer: 3% nonfat dry milk in TBST. Detection: ECL Basic Kit (RM00020). Exposure time: 30s.