

Datasheet for ABIN7269214
anti-PPIG antibody (pSer376)[Go to Product page](#)

1 Image

Overview

Quantity:	100 µL
Target:	PPIG
Binding Specificity:	pSer376
Reactivity:	Human
Host:	Rabbit
Clonality:	Polyclonal
Conjugate:	This PPIG antibody is un-conjugated
Application:	Western Blotting (WB)

Product Details

Purpose:	Phospho-PPIG-S376 Rabbit pAb
Immunogen:	A synthetic phosphorylated peptide around S376 of human PPIG (NP_004783.2).
Sequence:	VSSGE
Isotype:	IgG
Cross-Reactivity:	Human, Mouse, Rat
Characteristics:	Phosphorylated Antibodies
Purification:	Affinity purification

Target Details

Target:	PPIG
---------	------

Target Details

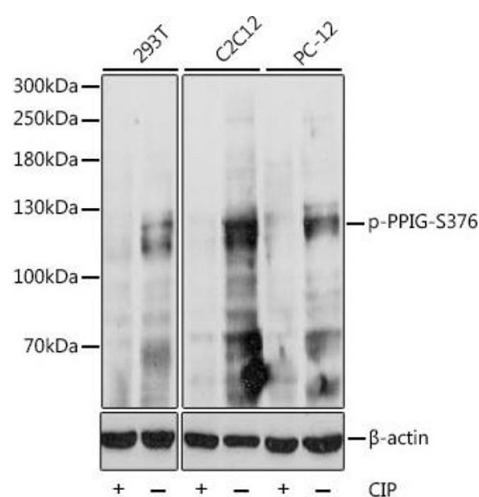
Alternative Name:	PPIG (PPIG Products)
Background:	PPlase that catalyzes the cis-trans isomerization of proline imidic peptide bonds in oligopeptides and may therefore assist protein folding (PubMed:20676357). May be implicated in the folding, transport, and assembly of proteins. May play an important role in the regulation of pre-mRNA splicing.,PPIG,CARS-Cyp,CYP,SCAF10,SRCyp,Epigenetics & Nuclear Signaling,RNA Binding,Signal Transduction,Protein phosphorylation,PPIG
Molecular Weight:	40kDa/88kDa
Gene ID:	9360
UniProt:	Q13427

Application Details

Application Notes:	WB,1:500 - 1:2000
Restrictions:	For Research Use only

Handling

Format:	Liquid
Buffer:	PBS with 0.02 % sodium azide,50 % glycerol, pH 7.3.
Preservative:	Sodium azide
Precaution of Use:	This product contains Sodium azide: a POISONOUS AND HAZARDOUS SUBSTANCE which should be handled by trained staff only.
Storage:	-20 °C
Storage Comment:	Store at -20°C. Avoid freeze / thaw cycles.



Western Blotting

Image 1. Western blot analysis of extracts of various cell lines, using Phospho-PPIG-S376 antibody (ABIN7269214) at 1:1000 dilution. 293T cell lysate were treated by CIP (20 µL CIP for each 400 µL cell lysate) at 37 °C for 1 hour. C2C12 cell lysate were treated by CIP (20 µL CIP for each 400 µL cell lysate) at 37 °C for 1 hour. PC-12 cell lysate were treated by CIP (20 µL CIP for each 400 µL cell lysate) at 37 °C for 1 hour. Secondary antibody: HRP Goat Anti-Rabbit IgG (H+L) (ABIN1684268 and ABIN3020597) at 1:10000 dilution. Lysates/proteins: 25 µg per lane. Blocking buffer: 3 % BSA. Detection: ECL Basic Kit (RM00020). Exposure time: 90s.