



[Go to Product page](#)

Datasheet for ABIN7269221  
**anti-PLIN3 antibody (AA 135-434)**

1 Image

Overview

Quantity:	100 µL
Target:	PLIN3
Binding Specificity:	AA 135-434
Reactivity:	Human
Host:	Rabbit
Clonality:	Polyclonal
Conjugate:	This PLIN3 antibody is un-conjugated
Application:	Western Blotting (WB)

Product Details

Purpose:	PLIN3 Rabbit pAb
Immunogen:	Recombinant fusion protein containing a sequence corresponding to amino acids 135-434 of human PLIN3 (NP_005808.3).
Sequence:	MVSSAKDTVA TQLSEAVDAT RGAVQSGVDK TKSVTGGVQ SVMGSRLGQM VLSGVDTVLG KSEEWADNHL PLTDAELARI ATSLDGFDA SVQQQRQEQS YFVRLGSLSE RLRQHAYEHS LGKLRATKQR AQEALLQLSQ VLSLMETVKQ GVDQKLVEGQ EKLHQMWLSW NQKQLQGPEK EPPKPEQVES RALTMFRDIA QQLQATCTSL GSSIQGLPTN VKDQVQQARR QVEDLQATFS SIHSFQDLSS SILAQSRERV ASAREALDHM VEYVAQNTPV TWLVGPFAPG ITEKAPEEKK
Isotype:	IgG
Cross-Reactivity:	Human
Characteristics:	Polyclonal Antibodies

## Product Details

---

Purification: Affinity purification

## Target Details

---

Target: PLIN3

Alternative Name: PLIN3 ([PLIN3 Products](#))

Background: Mannose 6-phosphate receptors (MPRs) deliver lysosomal hydrolase from the Golgi to endosomes and then return to the Golgi complex. The protein encoded by this gene interacts with the cytoplasmic domains of both cation-independent and cation-dependent MPRs, and is required for endosome-to-Golgi transport. This protein also binds directly to the GTPase RAB9 (RAB9A), a member of the RAS oncogene family. The interaction with RAB9 has been shown to increase the affinity of this protein for its cargo. Multiple transcript variants encoding different isoforms have been found for this gene.,PLIN3,M6PRBP1,PP17,TIP47,Signal Transduction,PLIN3

Molecular Weight: 28kDa/45kDa/46kDa/47kDa

Gene ID: 10226

UniProt: [O60664](#)

## Application Details

---

Application Notes: WB,1:500 - 1:1000

Restrictions: For Research Use only

## Handling

---

Format: Liquid

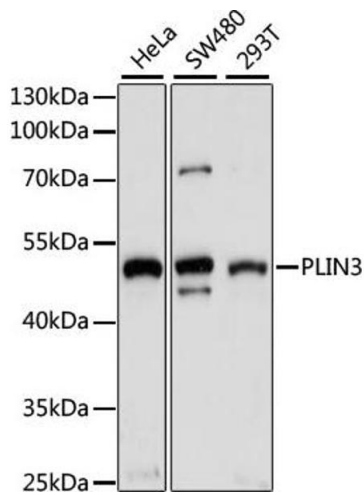
Buffer: PBS with 0.02 % sodium azide,50 % glycerol, pH 7.3.

Preservative: Sodium azide

Precaution of Use: This product contains Sodium azide: a POISONOUS AND HAZARDOUS SUBSTANCE which should be handled by trained staff only.

Storage: -20 °C

Storage Comment: Store at -20°C. Avoid freeze / thaw cycles.



### Western Blotting

**Image 1.** Western blot analysis of extracts of various cell lines, using PLIN3 antibody (ABIN7269221) at 1:1000 dilution. Secondary antibody: HRP Goat Anti-Rabbit IgG (H+L) (ABIN1684268 and ABIN3020597) at 1:10000 dilution. Lysates/proteins: 25 µg per lane. Blocking buffer: 3 % nonfat dry milk in TBST. Detection: ECL Enhanced Kit (RM00021). Exposure time: 30s.