

Datasheet for ABIN7269229
anti-PPHLN1 antibody (AA 195-255)[Go to Product page](#)

1 Image

Overview

Quantity:	100 µL
Target:	PPHLN1
Binding Specificity:	AA 195-255
Reactivity:	Human
Host:	Rabbit
Clonality:	Polyclonal
Conjugate:	This PPHLN1 antibody is un-conjugated
Application:	Western Blotting (WB)

Product Details

Purpose:	PPHLN1 Rabbit pAb
Immunogen:	Recombinant fusion protein containing a sequence corresponding to amino acids 195-255 of human PPHLN1 (NP_958846.1).
Sequence:	KSDESNLPEI SEYEAGSTAP LFTDQPREEPE SNTHGIELF EDSQLTTRSK AIASKTKEIE Q
Isotype:	IgG
Cross-Reactivity:	Human, Mouse, Rat
Characteristics:	Polyclonal Antibodies
Purification:	Affinity purification

Target Details

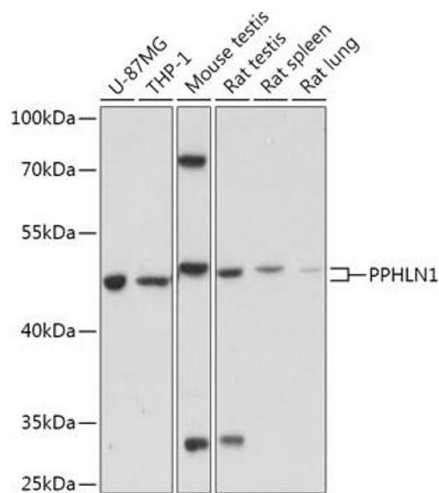
Target:	PPHLN1
Alternative Name:	PPHLN1 (PPHLN1 Products)
Background:	<p>The protein encoded by this gene is one of the several proteins that become sequentially incorporated into the cornified cell envelope during the terminal differentiation of keratinocyte at the outer layers of epidermis. This protein interacts with periplakin, which is known as a precursor of the cornified cell envelope. The cellular localization pattern and insolubility of this protein suggest that it may play a role in epithelial differentiation and contribute to epidermal integrity and barrier formation. Multiple alternatively spliced transcript variants encoding distinct isoforms have been observed. [provided by RefSeq, Jul 2008],CR,HSPC206,HSPC232,PPHLN1,Epigenetics & Nuclear Signaling,RNA Binding,Cell Biology & Developmental Biology,Cell Cycle,Cell differentiation,PPHLN1</p>
Gene ID:	51535
UniProt:	Q8NEY8

Application Details

Application Notes:	WB,1:500 - 1:2000
Restrictions:	For Research Use only

Handling

Format:	Liquid
Buffer:	PBS with 0.02 % sodium azide,50 % glycerol, pH 7.3.
Preservative:	Sodium azide
Precaution of Use:	This product contains Sodium azide: a POISONOUS AND HAZARDOUS SUBSTANCE which should be handled by trained staff only.
Storage:	-20 °C
Storage Comment:	Store at -20°C. Avoid freeze / thaw cycles.



Western Blotting

Image 1. Western blot analysis of extracts of various cell lines, using PPHLN1 antibody (ABIN7269229) at 1:1000 dilution. Secondary antibody: HRP Goat Anti-Rabbit IgG (H+L) (ABIN1684268 and ABIN3020597) at 1:10000 dilution. Lysates/proteins: 25 µg per lane. Blocking buffer: 3 % nonfat dry milk in TBST. Detection: ECL Basic Kit (RM00020). Exposure time: 10s.