



[Go to Product page](#)

Datasheet for ABIN7269261  
**anti-PHF10 antibody (AA 1-300)**

1 Image

Overview

Quantity:	100 µL
Target:	PHF10
Binding Specificity:	AA 1-300
Reactivity:	Human
Host:	Rabbit
Clonality:	Polyclonal
Conjugate:	This PHF10 antibody is un-conjugated
Application:	Western Blotting (WB)

Product Details

Purpose:	PHF10 Rabbit pAb
Immunogen:	Recombinant fusion protein containing a sequence corresponding to amino acids 1-300 of human PHF10 (NP_060758.2).
Sequence:	MAAAAGPGAA LSPRPCSDP ATPGAQSPKD DNEDNSNDGT QPSKRRRMGS GDSSRSCETS SQDLGFSYYP AENLIEYKWP PDETGEYYML QEQVSEYLG VTSFKRKYPDL ERRDLSHKEK LYLRELVIT ETQCTLGLTA LRSDEVIDLM IKEYPAKHA EYSVILQEKER QRITDHYKEY SQMQQQNTQK VEASKVPEYI KKAACKAAEF NSNLNRERME ERRAYFDLQT HVIQVPQGKY KVLPTERTKV SSYPVALIPG QFQEYYKRY S PDELRYLPLN TALYEPPLDP ELPALDSDGD
Isotype:	IgG
Cross-Reactivity:	Human, Mouse
Characteristics:	Polyclonal Antibodies

## Product Details

---

Purification: Affinity purification

## Target Details

---

Target: PHF10

Alternative Name: PHF10 ([PHF10 Products](#))

Background: This gene contains a predicted ORF that encodes a protein with two zinc finger domains. The function of the encoded protein is not known. Sequence analysis suggests that multiple alternatively spliced transcript variants are derived from this gene but the full-length nature of only two of them is known. These two splice variants encode different isoforms. A pseudogene for this gene is located on Xq28.,PHF10,BAF45A,XAP135,Epigenetics & Nuclear Signaling,PHF10

Molecular Weight: 51kDa/55kDa/56kDa

Gene ID: 55274

UniProt: [Q8WUB8](#)

## Application Details

---

Application Notes: WB,1:200 - 1:2000

Restrictions: For Research Use only

## Handling

---

Format: Liquid

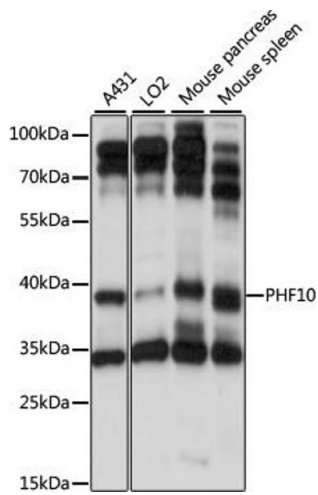
Buffer: PBS with 0.02 % sodium azide,50 % glycerol, pH 7.3.

Preservative: Sodium azide

Precaution of Use: This product contains Sodium azide: a POISONOUS AND HAZARDOUS SUBSTANCE which should be handled by trained staff only.

Storage: -20 °C

Storage Comment: Store at -20°C. Avoid freeze / thaw cycles.



### Western Blotting

**Image 1.** Western blot analysis of extracts of various cell lines, using PHF10 antibody (ABIN7269261) at 1:1000 dilution. Secondary antibody: HRP Goat Anti-Rabbit IgG (H+L) (ABIN1684268 and ABIN3020597) at 1:10000 dilution. Lysates/proteins: 25 µg per lane. Blocking buffer: 3 % nonfat dry milk in TBST. Detection: ECL Basic Kit (RM00020). Exposure time: 10s.