



[Go to Product page](#)

Datasheet for ABIN7269269  
**anti-Phosducin antibody (AA 1-246)**

2 Images

Overview

Quantity:	100 µL
Target:	Phosducin (PDC)
Binding Specificity:	AA 1-246
Reactivity:	Human
Host:	Rabbit
Clonality:	Polyclonal
Conjugate:	This Phosducin antibody is un-conjugated
Application:	Western Blotting (WB), Immunohistochemistry (IHC)

Product Details

Purpose:	PDC Rabbit pAb
Immunogen:	Recombinant fusion protein containing a sequence corresponding to amino acids 1-246 of human PDC (NP_002588.3).
Sequence:	MEEAKSQSLE EDFEGQATHT GPKGVIINDWR KFKLESQDSD SIPPSKKEIL RQMSSPQSRN GKDSKERVSR KMSIQEYELI HKEKEDENCL RKYRRQCMQD MHQKLSFGPR YGFVYELETG KQFLETIEKE LKITTIVVHI YEDGIGCDA LNSSLTCLAA EYPIVKFCKI KASNTGAGDR FSLDVLPTLL IYKGGELISN FISVAEQFAE EFFAGDVESF LNEYGLLPER EVHVLEHTKI EEEDVE
Isotype:	IgG
Cross-Reactivity:	Mouse, Rat
Characteristics:	Polyclonal Antibodies

## Product Details

---

Purification: Affinity purification

## Target Details

---

Target: Phosducin (PDC)

Alternative Name: PDC ([PDC Products](#))

Background: This gene encodes a phosphoprotein, which is located in the outer and inner segments of the rod cells in the retina. This protein may participate in the regulation of visual phototransduction or in the integration of photoreceptor metabolism. It modulates the phototransduction cascade by interacting with the beta and gamma subunits of the retinal G-protein transducin. This gene is a potential candidate gene for retinitis pigmentosa and Usher syndrome type II. Alternatively spliced transcript variants encoding different isoforms have been identified.,PDC,MEKA,PHD,PhLOP,PhLP,phosducin,Signal Transduction,G protein signaling,G-Protein-Coupled Receptors(GPCR),PDC

Molecular Weight: 22kDa/28kDa/32kDa

Gene ID: 5132

UniProt: [P20941](#)

## Application Details

---

Application Notes: WB,1:500 - 1:2000,IHC,1:50 - 1:200

Restrictions: For Research Use only

## Handling

---

Format: Liquid

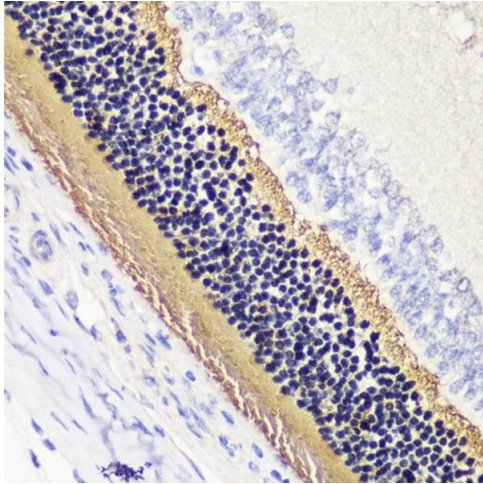
Buffer: PBS with 0.02 % sodium azide,50 % glycerol, pH 7.3.

Preservative: Sodium azide

Precaution of Use: This product contains Sodium azide: a POISONOUS AND HAZARDOUS SUBSTANCE which should be handled by trained staff only.

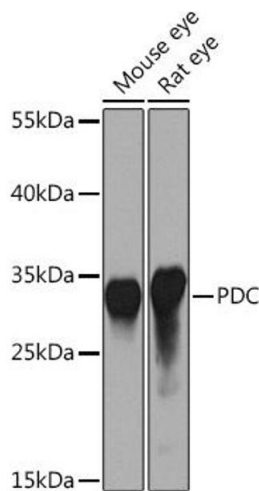
Storage: -20 °C

Storage Comment: Store at -20°C. Avoid freeze / thaw cycles.



### Immunohistochemistry

**Image 1.** Immunohistochemistry of paraffin-embedded rat retina using PDC antibody (ABIN7269269) at dilution of 1:200 (40x lens). Perform microwave antigen retrieval with 10 mM PBS buffer pH 7.2 before commencing with IHC staining protocol.



### Western Blotting

**Image 2.** Western blot analysis of extracts of various cell lines, using PDC Rabbit pAb (ABIN7269269) at 1:1000 dilution. Secondary antibody: HRP Goat Anti-Rabbit IgG (H+L) (ABIN1684268 and ABIN3020597) at 1:10000 dilution. Lysates/proteins: 25 µg per lane. Blocking buffer: 3 % nonfat dry milk in TBST. Detection: ECL Basic Kit (RM00020). Exposure time: 10s.