



[Go to Product page](#)

Datasheet for ABIN7269292
anti-PIGX antibody (AA 80-220)

1 Image

Overview

Quantity:	100 µL
Target:	PIGX
Binding Specificity:	AA 80-220
Reactivity:	Human
Host:	Rabbit
Clonality:	Polyclonal
Conjugate:	This PIGX antibody is un-conjugated
Application:	Western Blotting (WB)

Product Details

Purpose:	PIGX Rabbit pAb
Immunogen:	Recombinant fusion protein containing a sequence corresponding to amino acids 80-220 of human PIGX (NP_060331.3).
Sequence:	LIKQDIPAGL YVDPYELASL RERNITEAVM VSENFIDIEAP NYLSKESEVL IYARRDSQCI DCFQAFPLVH CRYHRPHSED GEASIVVNNP DLLMFCDQEF PILKCWAHSE VAAPCALENE DICQWNKMKY KSVYKNVILQ V
Isotype:	IgG
Cross-Reactivity:	Rat
Characteristics:	Polyclonal Antibodies
Purification:	Affinity purification

Target Details

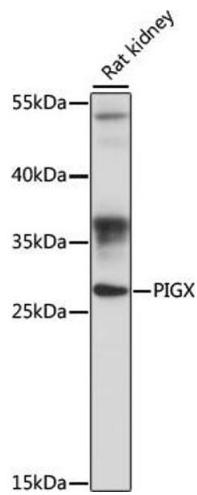
Target:	PIGX
Alternative Name:	PIGX (PIGX Products)
Background:	This gene encodes a type I transmembrane protein in the endoplasmic reticulum (ER). The protein is an essential component of glycosylphosphatidylinositol-mannosyltransferase I, which transfers the first of the four mannoses in the GPI-anchor precursors during GPI-anchor biosynthesis. Studies in rat indicate that the protein is translated from a non-AUG translation initiation site. Alternative splicing results in multiple transcript variants.,PIGX,PIGX,Cancer,Signal Transduction,Endocrine & Metabolism,Lipid Metabolism,PIGX
Molecular Weight:	28kDa/30kDa
Gene ID:	54965
UniProt:	Q8TBF5
Pathways:	Inositol Metabolic Process

Application Details

Application Notes:	WB,1:200 - 1:2000
Restrictions:	For Research Use only

Handling

Format:	Liquid
Buffer:	PBS with 0.02 % sodium azide,50 % glycerol, pH 7.3.
Preservative:	Sodium azide
Precaution of Use:	This product contains Sodium azide: a POISONOUS AND HAZARDOUS SUBSTANCE which should be handled by trained staff only.
Storage:	-20 °C
Storage Comment:	Store at -20°C. Avoid freeze / thaw cycles.



Western Blotting

Image 1. Western blot analysis of extracts of rat kidney, using PIGX antibody (ABIN7269292) at 1:1000 dilution. Secondary antibody: HRP Goat Anti-Rabbit IgG (H+L) (ABIN1684268 and ABIN3020597) at 1:10000 dilution. Lysates/proteins: 25 µg per lane. Blocking buffer: 3 % nonfat dry milk in TBST. Detection: ECL Basic Kit (RM00020). Exposure time: 90s.