

Datasheet for ABIN7269294
anti-PIGM antibody (AA 35-96)[Go to Product page](#)

4 Images

Overview

Quantity:	100 µL
Target:	PIGM
Binding Specificity:	AA 35-96
Reactivity:	Human
Host:	Rabbit
Clonality:	Polyclonal
Conjugate:	This PIGM antibody is un-conjugated
Application:	Western Blotting (WB), Immunohistochemistry (IHC), Immunofluorescence (IF)

Product Details

Purpose:	PIGM Rabbit pAb
Immunogen:	Recombinant fusion protein containing a sequence corresponding to amino acids 35-96 of human PIGM (NP_660150.1).
Sequence:	YGVFQDRTLH VRYTDIDYQV FTDAARFVTE GRSPYLRATY RYTPLLGWLL TPNIYLSSELF GK
Isotype:	IgG
Cross-Reactivity:	Human, Mouse, Rat
Characteristics:	Polyclonal Antibodies
Purification:	Affinity purification

Target Details

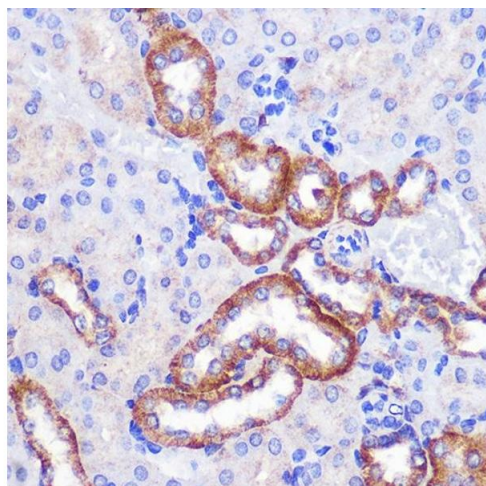
Target:	PIGM
Alternative Name:	PIGM (PIGM Products)
Background:	<p>This gene encodes a transmembrane protein that is located in the endoplasmic reticulum and is involved in GPI-anchor biosynthesis. The glycosylphosphatidylinositol (GPI)-anchor is a glycolipid which contains three mannose molecules in its core backbone. The GPI-anchor is found on many blood cells and serves to anchor proteins to the cell surface. This gene encodes a mannosyltransferase, GPI-MT-I, that transfers the first mannose to GPI on the luminal side of the endoplasmic reticulum. [provided by RefSeq, Jul 2008],GPI-MT-I,PIGM,Signal Transduction,Endocrine & Metabolism,Lipid Metabolism,PIGM</p>
Gene ID:	93183
UniProt:	Q9H3S5
Pathways:	Inositol Metabolic Process , Cellular Glucan Metabolic Process

Application Details

Application Notes:	WB,1:500 - 1:2000,IHC,1:50 - 1:200,IF,1:50 - 1:200
Restrictions:	For Research Use only

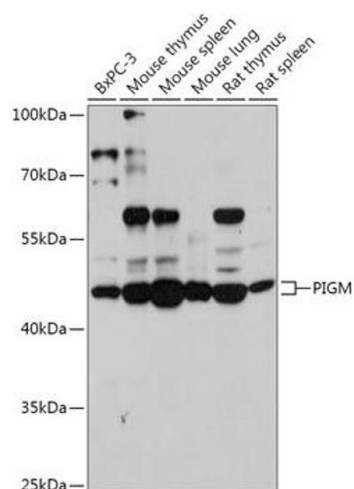
Handling

Format:	Liquid
Buffer:	PBS with 0.02 % sodium azide,50 % glycerol, pH 7.3.
Preservative:	Sodium azide
Precaution of Use:	This product contains Sodium azide: a POISONOUS AND HAZARDOUS SUBSTANCE which should be handled by trained staff only.
Storage:	-20 °C
Storage Comment:	Store at -20°C. Avoid freeze / thaw cycles.



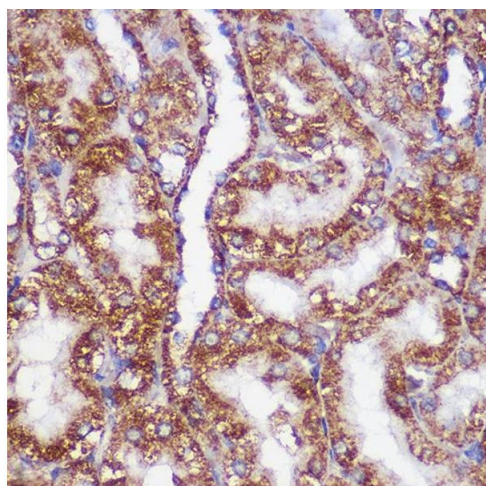
Immunohistochemistry

Image 1. Immunohistochemistry of paraffin-embedded Mouse kidney using PIGM Rabbit pAb (ABIN7269294) at dilution of 1:100 (40x lens). Perform microwave antigen retrieval with 10 mM PBS buffer pH 7.2 before commencing with IHC staining protocol.



Western Blotting

Image 2. Western blot analysis of extracts of various cell lines, using PIGM antibody (ABIN7269294) at 1:1000 dilution. Secondary antibody: HRP Goat Anti-Rabbit IgG (H+L) (ABIN1684268 and ABIN3020597) at 1:10000 dilution. Lysates/proteins: 25 µg per lane. Blocking buffer: 3 % nonfat dry milk in TBST. Detection: ECL Basic Kit (RM00020). Exposure time: 120s.



Immunohistochemistry

Image 3. Immunohistochemistry of paraffin-embedded Rat kidney using PIGM Rabbit pAb (ABIN7269294) at dilution of 1:100 (40x lens). Perform microwave antigen retrieval with 10 mM PBS buffer pH 7.2 before commencing with IHC staining protocol.

Please check the [product details page](#) for more images. Overall 4 images are available for ABIN7269294.