

Datasheet for ABIN7269304
anti-PDE6G antibody (AA 1-87)[Go to Product page](#)

4 Images

Overview

Quantity:	100 µL
Target:	PDE6G
Binding Specificity:	AA 1-87
Reactivity:	Human
Host:	Rabbit
Clonality:	Polyclonal
Conjugate:	This PDE6G antibody is un-conjugated
Application:	Western Blotting (WB), Immunofluorescence (IF)

Product Details

Purpose:	PDE6G Rabbit pAb
Immunogen:	Recombinant fusion protein containing a sequence corresponding to amino acids 1-87 of human PDE6G (NP_002593.1).
Sequence:	MNLEPPKAEF RSATRVAGGP VTPRKGPPEF KQRQTRQFKS KPPKKGVQGF GDDIPGMEGL GTDITVICPW EAFNHLELHE LAQYGII
Isotype:	IgG
Cross-Reactivity:	Human, Mouse, Rat
Characteristics:	Polyclonal Antibodies
Purification:	Affinity purification

Target Details

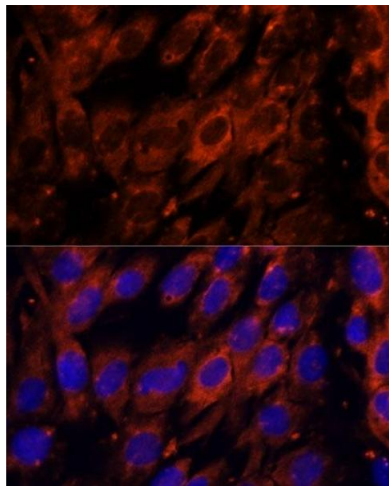
Target:	PDE6G
Alternative Name:	PDE6G (PDE6G Products)
Background:	This gene encodes the gamma subunit of cyclic GMP-phosphodiesterase, which is composed of alpha- and beta- catalytic subunits and two identical, inhibitory gamma subunits. This gene is expressed in rod photoreceptors and functions in the phototransduction signaling cascade. It is also expressed in a variety of other tissues, and has been shown to regulate the c-Src protein kinase and G-protein-coupled receptor kinase 2. Alternative splicing results in multiple transcript variants. [provided by RefSeq, Feb 2009],PDEG,RP57,PDE6G,Signal Transduction,PDE6G
Gene ID:	5148
UniProt:	P18545
Pathways:	EGFR Signaling Pathway , Regulation of G-Protein Coupled Receptor Protein Signaling , Phototransduction

Application Details

Application Notes:	WB,1:500 - 1:2000,IF,1:50 - 1:200
Restrictions:	For Research Use only

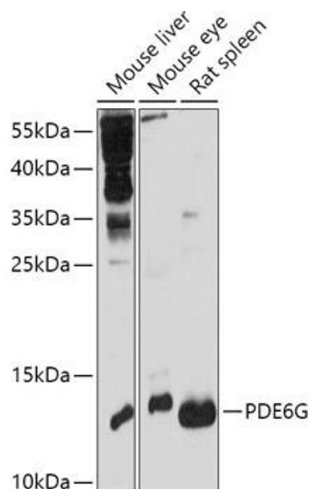
Handling

Format:	Liquid
Buffer:	PBS with 0.02 % sodium azide,50 % glycerol, pH 7.3.
Preservative:	Sodium azide
Precaution of Use:	This product contains Sodium azide: a POISONOUS AND HAZARDOUS SUBSTANCE which should be handled by trained staff only.
Storage:	-20 °C
Storage Comment:	Store at -20°C. Avoid freeze / thaw cycles.



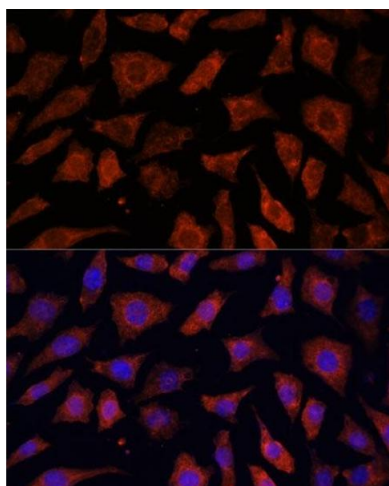
Immunofluorescence

Image 1. Immunofluorescence analysis of C6 cells using PDE6G antibody (ABIN7269304) at dilution of 1:100. Blue: DAPI for nuclear staining.



Western Blotting

Image 2. Western blot analysis of extracts of various cell lines, using PDE6G antibody (ABIN7269304) at 1:1000 dilution. Secondary antibody: HRP Goat Anti-Rabbit IgG (H+L) (ABIN1684268 and ABIN3020597) at 1:10000 dilution. Lysates/proteins: 25 µg per lane. Blocking buffer: 3 % nonfat dry milk in TBST. Detection: ECL Basic Kit (RM00020). Exposure time: 30s.



Immunofluorescence

Image 3. Immunofluorescence analysis of L929 cells using PDE6G antibody (ABIN7269304) at dilution of 1:100. Blue: DAPI for nuclear staining.

Please check the [product details page](#) for more images. Overall 4 images are available for ABIN7269304.