



[Go to Product page](#)

Datasheet for ABIN7269305
anti-PDE7A antibody (AA 345-456)

1 Image

Overview

| | |
|----------------------|--------------------------------------|
| Quantity: | 100 µL |
| Target: | PDE7A |
| Binding Specificity: | AA 345-456 |
| Reactivity: | Human |
| Host: | Rabbit |
| Clonality: | Polyclonal |
| Conjugate: | This PDE7A antibody is un-conjugated |
| Application: | Western Blotting (WB) |

Product Details

| | |
|-------------------|--|
| Purpose: | PDE7A Rabbit pAb |
| Immunogen: | Recombinant fusion protein containing a sequence corresponding to amino acids 345-456 of human PDE7A (NP_002594.1). |
| Sequence: | ELSKQWSEKV TEEFFHQGDI EKKYHLGVSP LCDRHTESIA NIQIGFMTYL VEPLFTEWAR FSNTRLSQTM LGHVGLNKAS WKGLQREQSS SEDTDAAFEL NSQLLPQENR LS |
| Isotype: | IgG |
| Cross-Reactivity: | Human, Mouse, Rat |
| Characteristics: | Polyclonal Antibodies |
| Purification: | Affinity purification |

Target Details

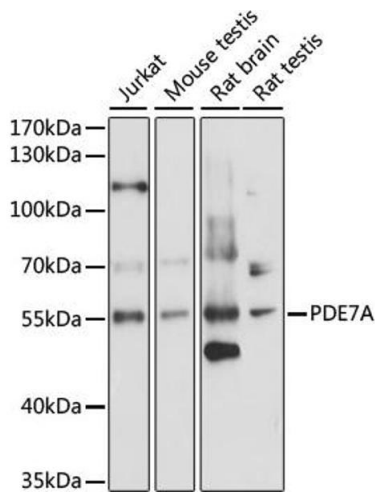
| | |
|-------------------|---|
| Target: | PDE7A |
| Alternative Name: | PDE7A (PDE7A Products) |
| Background: | <p>The protein encoded by this gene belongs to the cyclic nucleotide phosphodiesterase (PDE) family, and PDE7 subfamily. This PDE hydrolyzes the second messenger, cAMP, which is a regulator and mediator of a number of cellular responses to extracellular signals. Thus, by regulating the cellular concentration of cAMP, this protein plays a key role in many important physiological processes. Alternatively spliced transcript variants encoding different isoforms have been described for this gene.,PDE7A,HCP1,PDE7,Signal Transduction,Neuroscience,PDE7A</p> |
| Molecular Weight: | 48kDa/52kDa/55kDa |
| Gene ID: | 5150 |
| UniProt: | Q13946 |
| Pathways: | cAMP Metabolic Process |

Application Details

| | |
|--------------------|-----------------------|
| Application Notes: | WB,1:500 - 1:2000 |
| Restrictions: | For Research Use only |

Handling

| | |
|--------------------|--|
| Format: | Liquid |
| Buffer: | PBS with 0.02 % sodium azide,50 % glycerol, pH 7.3. |
| Preservative: | Sodium azide |
| Precaution of Use: | This product contains Sodium azide: a POISONOUS AND HAZARDOUS SUBSTANCE which should be handled by trained staff only. |
| Storage: | -20 °C |
| Storage Comment: | Store at -20°C. Avoid freeze / thaw cycles. |



Western Blotting

Image 1. Western blot analysis of extracts of various cell lines, using PDE7A antibody (ABIN7269305) at 1:1000 dilution. Secondary antibody: HRP Goat Anti-Rabbit IgG (H+L) (ABIN1684268 and ABIN3020597) at 1:10000 dilution. Lysates/proteins: 25 µg per lane. Blocking buffer: 3 % nonfat dry milk in TBST. Detection: ECL Enhanced Kit (RM00021). Exposure time: 10s.