

Datasheet for ABIN7269306

anti-PEPCK antibody**3** Images[Go to Product page](#)

Overview

Quantity:	100 µL
Target:	PEPCK
Reactivity:	Human
Host:	Rabbit
Clonality:	Monoclonal
Conjugate:	This PEPCK antibody is un-conjugated
Application:	Western Blotting (WB), Immunofluorescence (IF)

Product Details

Purpose:	PEPCK/PCK2 Rabbit mAb
Immunogen:	A synthesized peptide derived from human PEPCK/PEPCK/PCK2
Isotype:	IgG
Cross-Reactivity:	Human, Mouse, Rat
Characteristics:	Monoclonal Antibodies
Purification:	Affinity purification

Target Details

Target:	PEPCK
Alternative Name:	PCK2 (PEPCK Products)
Background:	This gene encodes a mitochondrial enzyme that catalyzes the conversion of oxaloacetate to

Target Details

phosphoenolpyruvate in the presence of guanosine triphosphate (GTP). A cytosolic form of this protein is encoded by a different gene and is the key enzyme of gluconeogenesis in the liver. Alternatively spliced transcript variants have been described. [provided by RefSeq, Apr 2014],PEPCK, PEPCK-M, PEPCK2,Cancer,Carbohydrate metabolism,Cardiovascular,Endocrine & Metabolism,Endocrine and metabolic diseases,Endocrine and metabolic diseases_Obesity,Kinase,Lipid Metabolism,Lipid Metabolism_Cholesterol Metabolism,Lipids,Mitochondrial metabolism,Mitochondrial metabolism_Mitochondrial markers,Signal Transduction,PCK2

Molecular Weight: 71kDa

Gene ID: 5106

UniProt: [Q16822](#)

Pathways: [Positive Regulation of Peptide Hormone Secretion](#), [Carbohydrate Homeostasis](#)

Application Details

Application Notes: WB,1:500 - 1:2000,IF,1:50 - 1:200

Restrictions: For Research Use only

Handling

Format: Liquid

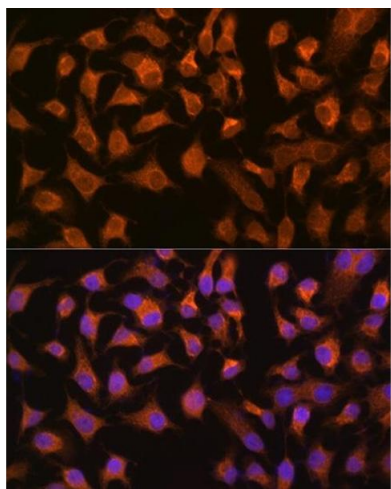
Buffer: PBS with 0.02 % sodium azide,0.05 % BSA,50 % glycerol, pH 7.3.

Preservative: Sodium azide

Precaution of Use: This product contains Sodium azide: a POISONOUS AND HAZARDOUS SUBSTANCE which should be handled by trained staff only.

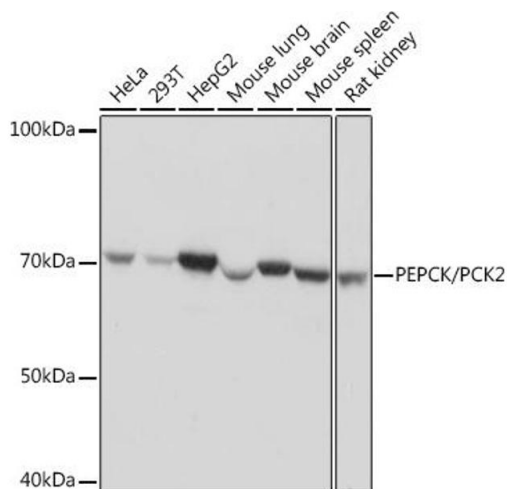
Storage: -20 °C

Storage Comment: Store at -20°C. Avoid freeze / thaw cycles.



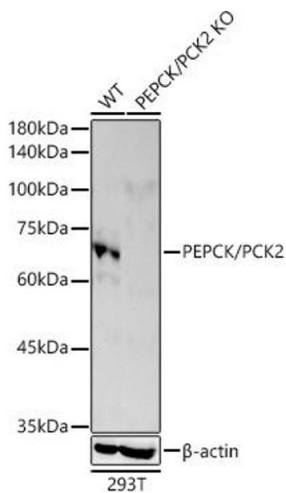
Immunofluorescence

Image 1. Immunofluorescence analysis of HeLa cells using PEPCK/PEPCK/PCK2 Rabbit mAb (ABIN7269306) at dilution of 1:100 (40x lens). Blue: DAPI for nuclear staining.



Western Blotting

Image 2. Western blot analysis of extracts of various cell lines, using PEPCK/PEPCK/PCK2 Rabbit mAb (ABIN7269306) at 1:1000 dilution. Secondary antibody: HRP Goat Anti-Rabbit IgG (H+L) (ABIN1684268 and ABIN3020597) at 1:10000 dilution. Lysates/proteins: 25 µg per lane. Blocking buffer: 3 % nonfat dry milk in TBST. Detection: ECL Basic Kit (RM00020). Exposure time: 1s.



Western Blotting

Image 3. Western blot analysis of extracts from wild type(WT) and PEPCK/PCK2 knockout (KO) 293T cells, using PEPCK/PCK2 antibody (ABIN7269306) at 1:1000 dilution. Secondary antibody: HRP Goat Anti-Rabbit IgG (H+L) (ABIN1684268 and ABIN3020597) at 1:10000 dilution. Lysates/proteins: 25 µg per lane. Blocking buffer: 3 % nonfat dry milk in TBST. Detection: ECL Basic Kit (RM00020). Exposure time: 30s.